

# WHAT'S NEW?

NEW PRODUCT INTRODUCTIONS

ELKHART BRASS



SPRING 2011

## Rise to the Challenge

### HERO PIPE: THE FIRST VIABLE SOLUTION FOR HIGH-RISE FIRES BEYOND THE REACH OF AN AERIAL.

Fires in buildings above the reach of ladder trucks pose unique and potentially dangerous challenges to firefighters attempting to battle the blaze directly. Elkhart's HERO Pipe system is a true game-changer. Because the HERO Pipe can deliver a high volume of water at the point of attack from the floor below, it is a great solution for urban firefighting.

- Works from exterior on virtually any building
- Delivers large volumes of water from an unmanned telescopic waterway
- Combined with Sidewinder™ EXM, targeted stream can be directed by remote control
- "Floor below" design provides safer option to neutralize hazardous material incidents
- Can be set up for action in as little as three minutes with two person team



SCORPION™ EXM  
– PAGE 2



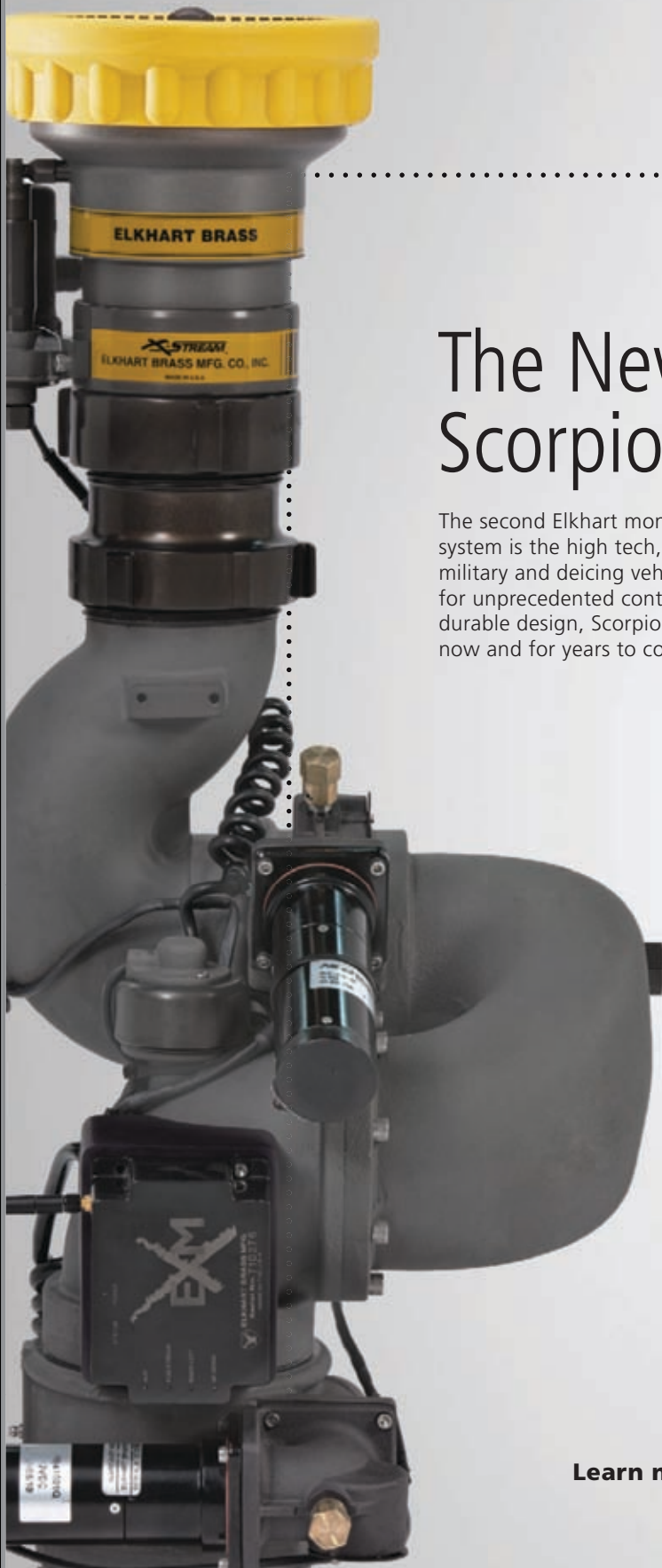
BUILD YOUR EXM  
– PAGE 3



SM500E  
– PAGE 3



105A HIGH-RISE ELBOW  
– PAGE 4



# EXM

## The New Scorpion™ EXM

The second Elkhart monitor to incorporate the powerful EXM operating system is the high tech, high-flow Scorpion EXM for fire apparatus, AARF, military and deicing vehicles. It can be integrated with other truck systems for unprecedented control. And with its exceptional flow efficiency and durable design, Scorpion EXM allows you to maximize your investment now and for years to come.

### Integration/control

- Wireless or wired communication via panel mount or handheld controller, joystick or OEM sourced controller or switches
- CAN bus J1939 and PLC compatible

### Durability

- Electric motors sealed to NEMA 6 (full submersion)
- Axially aligned thrust bearings
- Extreme torque motors
- Continuous duty motors

### Flow efficiency

- Superior range of vertical and horizontal motion
- 2500 GPM flow
- Patented variable cross-section vanned waterway

### Optimal return on investment

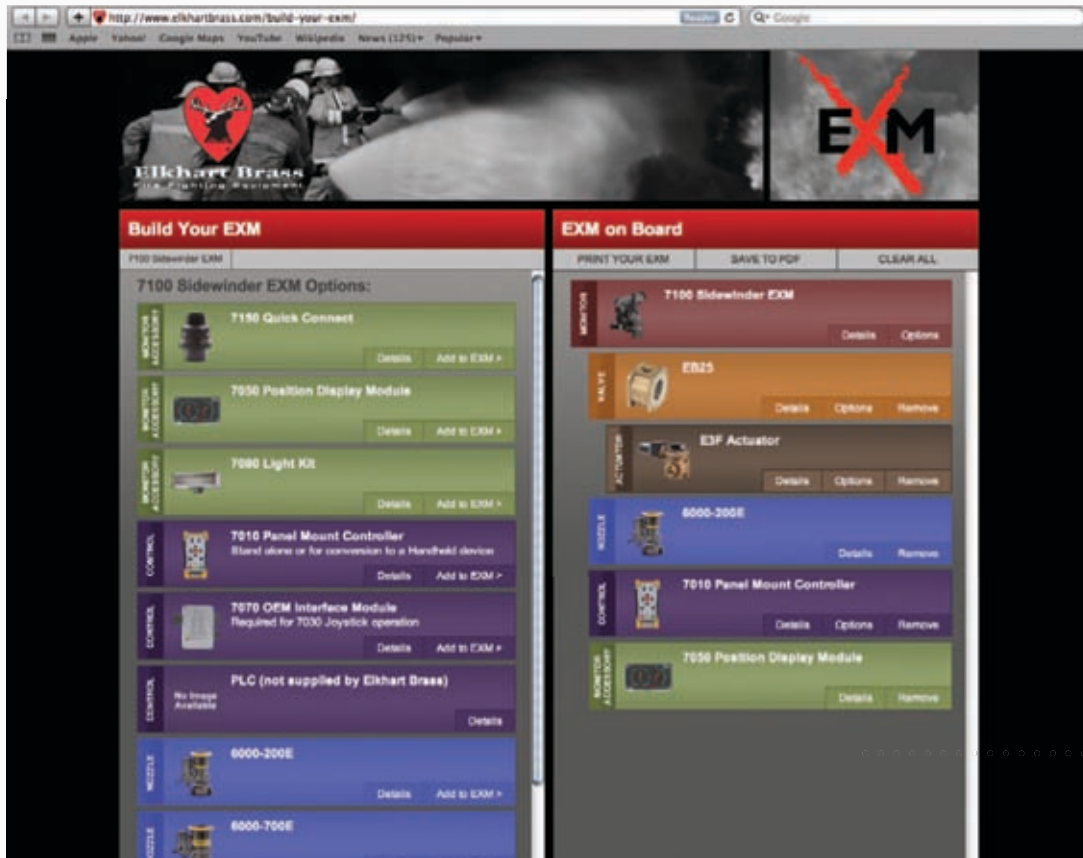
- System upgradeable to meet future needs
- Engineered for effective, long-term performance

Learn more at [www.elkhartexm.com](http://www.elkhartexm.com).

# Build Your EXM.

Elkhart Brass offers a variety of user selectable, EXM compatible components for use with our EXM enabled monitors. This new tool allows you to select components tailored to meet the needs of your application. Product descriptions, technical specifications, list prices and product numbers are all included so it's easy to spec. Easy to order. There are even pre-configurations available to get you started.

**Get started today at [elkhartbrass.com/build-your-exm/](http://elkhartbrass.com/build-your-exm/).**



## SM500E Automatic Nozzle

**Introducing the first automatic nozzle designed specifically with the Sidewinder EXM in mind.**

The newest member of Elkhart's X-Stream Master Stream nozzle family is the SM500E. Designed to perform exceptionally well in flow rate applications of the Sidewinder EXM, the SM500E automatically adjusts to maintain effective stream and maximum reach at variable or reduced flows, providing the flexibility to adapt to changing conditions or situations. It is also compatible with any 2.5" discharge electric monitor such as Elkhart's Stinger RF or Vulcan RF.

- Flow rate range of 350 – 1000 GPM
- Maintains pressure within +/-10 psi
- Low pressure (75 psi) and high pressure (100 psi) versions available
- Constructed of Elk-O-Lite with hard anodized finish

PRESORTED  
FIRST CLASS  
U.S. POSTAGE  
**PAID**  
SOUTH BEND, IN  
PERMIT NO. 16



*The Most Experienced Manufacturer of Fire Fighting Equipment*

Elkhart Brass Mfg. Co., Inc • 1302 W. Beardsley Avenue • Elkhart, Indiana 46514

1-574-295-8330 • 800-346-0250 • [www.elkhartbrass.com](http://www.elkhartbrass.com)

# HIGH-RISE ELBOW

## NEW MODEL 105A: COMPACT AND LIGHTWEIGHT

Elkhart's new Model 105A High-Rise Elbow is lightweight and compact with an integrated Model 114 drain valve to help relieve pressure from your current high-rise set up. It features a standard NH thread and knurled edge coupling for tight Class 1 or Class 3 hose cabinets. The 30-degree elbow all but eliminates hose kinking from the standpipe valve.

