

REV.	DESCRIPTION (NOTE: ADDITIONAL ECN BLOCKS TO BE COPIED AND FILLED OUT MANUALLY)	BY	E. C. N.
REL	RELEASE TO PRODUCTION	BJS	150208

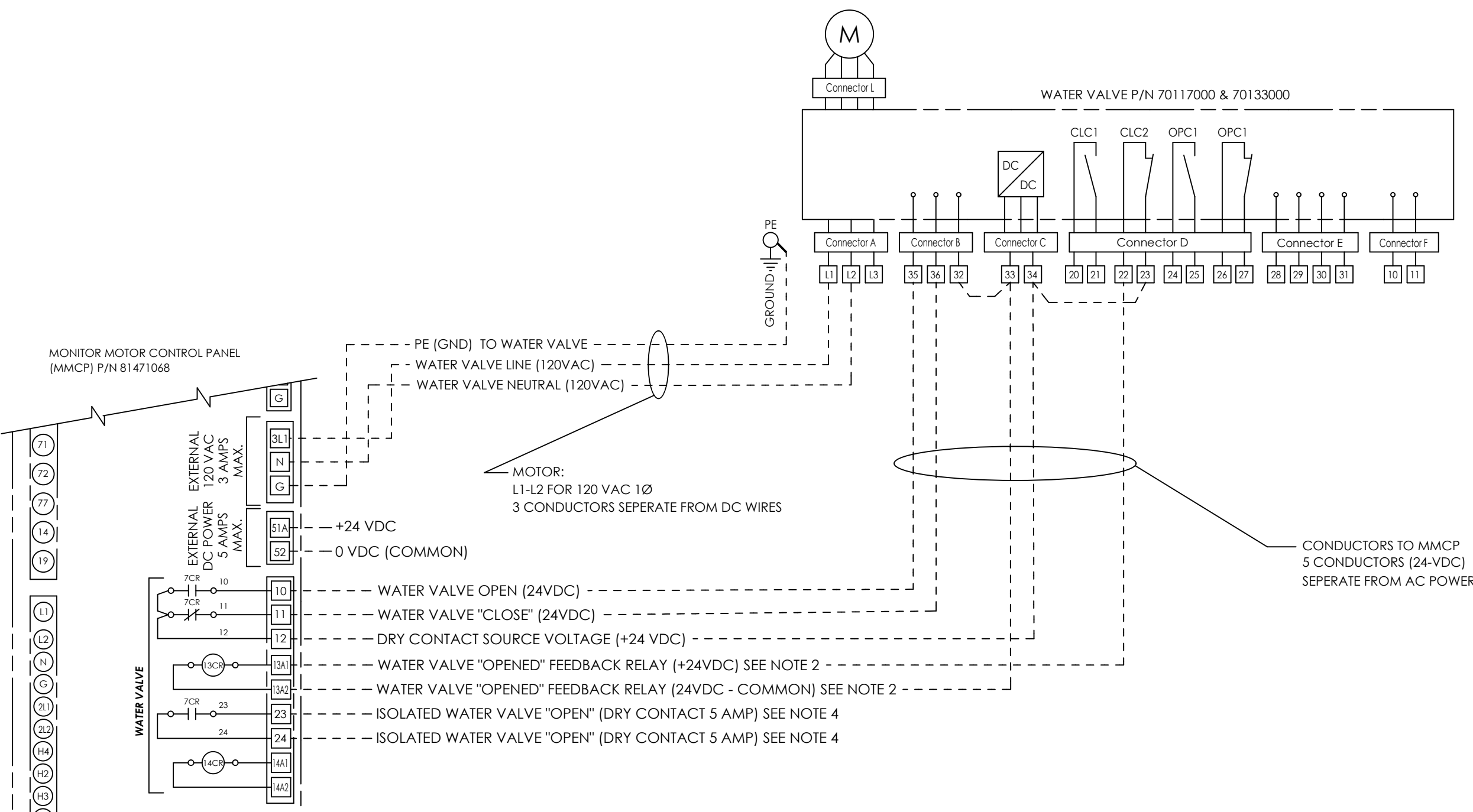


FIGURE 1
VALVE ELECTRICAL INTERCONNECTION
24 VDC CONTROL CONFIGURATION
FOR MMCP P/N 81471068

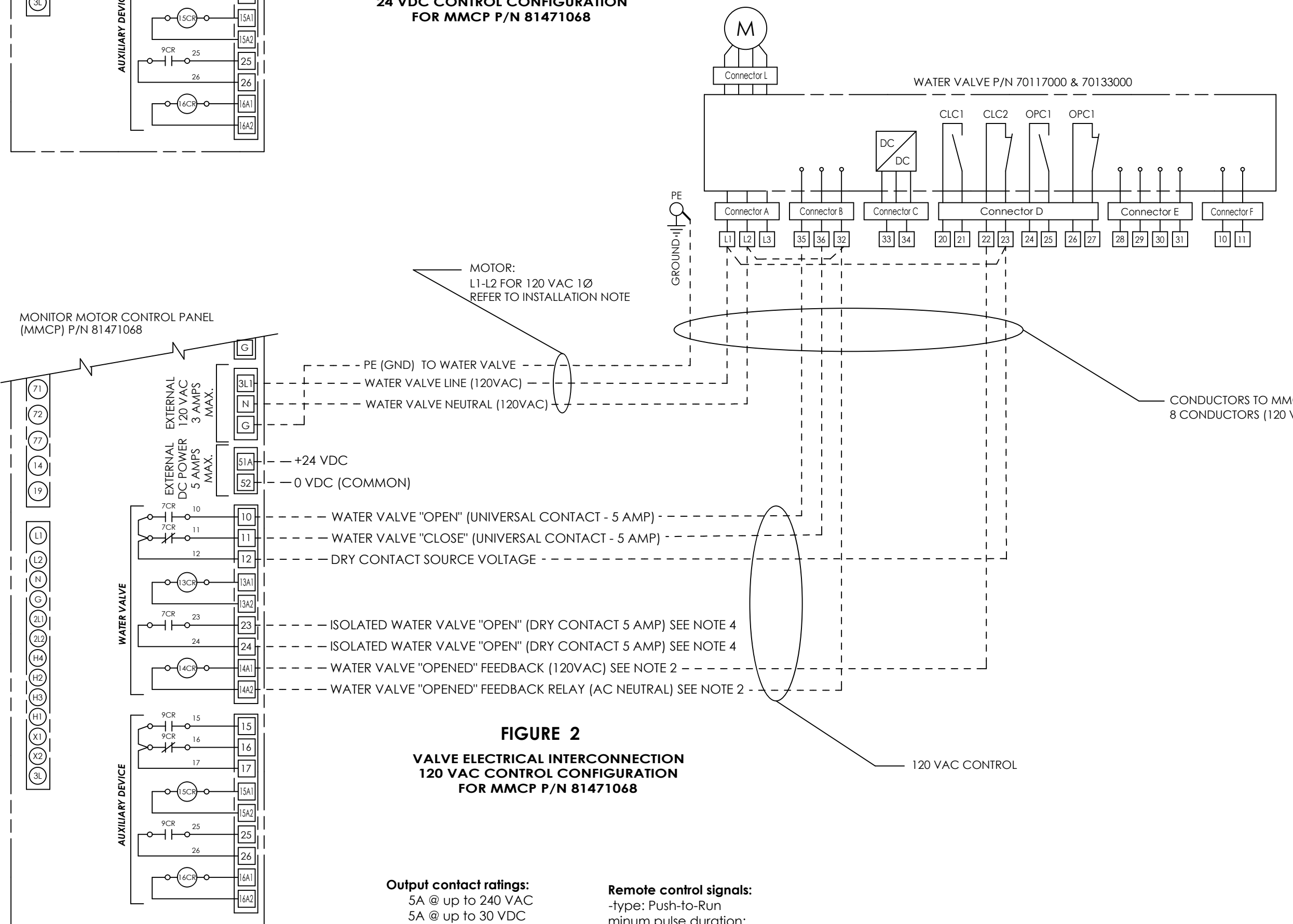


FIGURE 2
VALVE ELECTRICAL INTERCONNECTION
120 VAC CONTROL CONFIGURATION
FOR MMCP P/N 81471068

Output contact ratings:
5A @ up to 240 VAC
5A @ up to 30 VDC
0.5A @ 120VDC

Remote control signals:
-type: Push-to-Run
minum pulse duration:

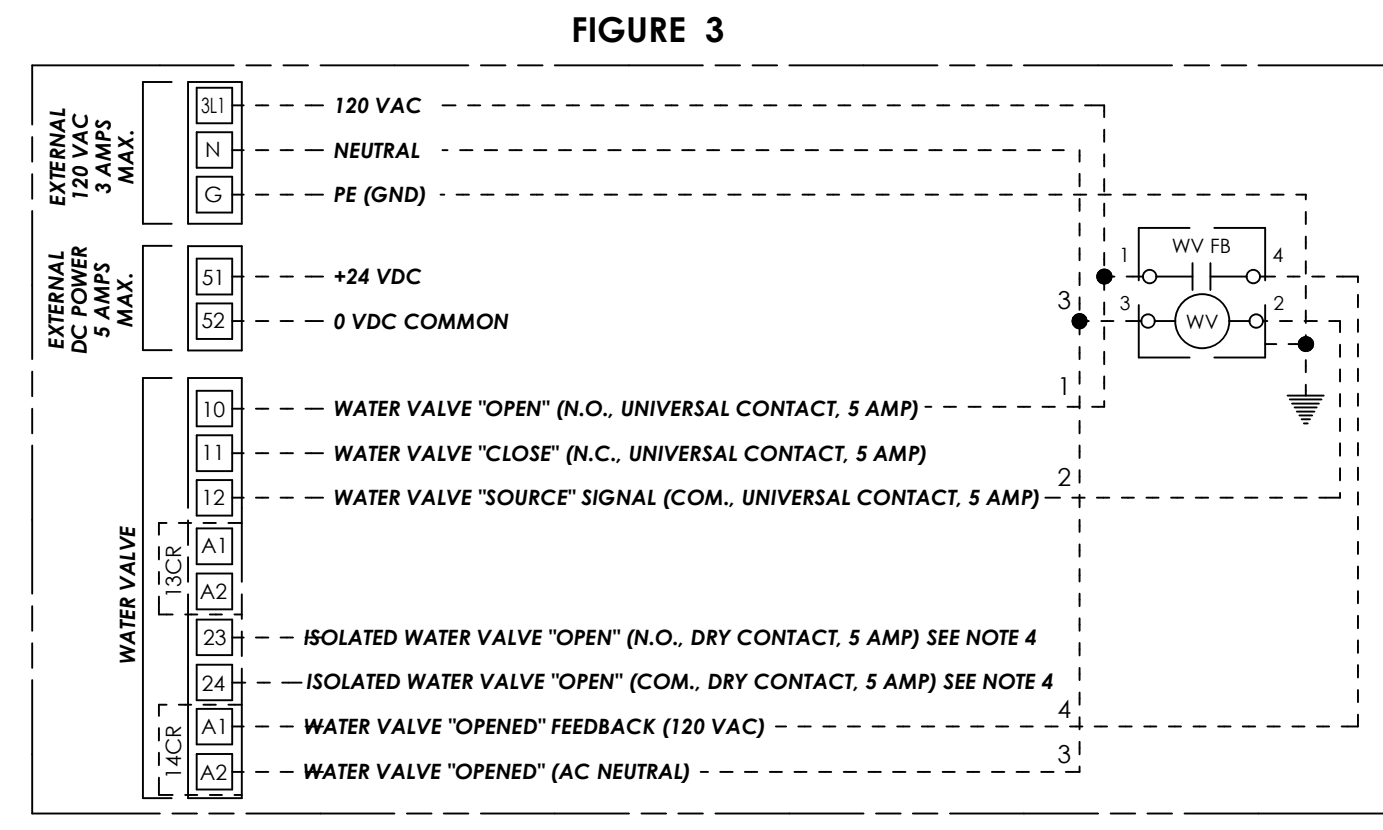


FIGURE 3

EXAMPLE OF A 120 VAC WATER VALVE (WV) SOLENOID WITH 120 VAC FEEDBACK (WV FB) (SEE NOTE 1). THE OUTPUT COIL WILL REMAIN SEALED UNTIL A REQUEST TO CLOSE THE VALVE OCCURS AT THE MMCP. THIS CONNECTION IS FOR A NON-ELKHART BRASS NORMALLY CLOSED VALVE.

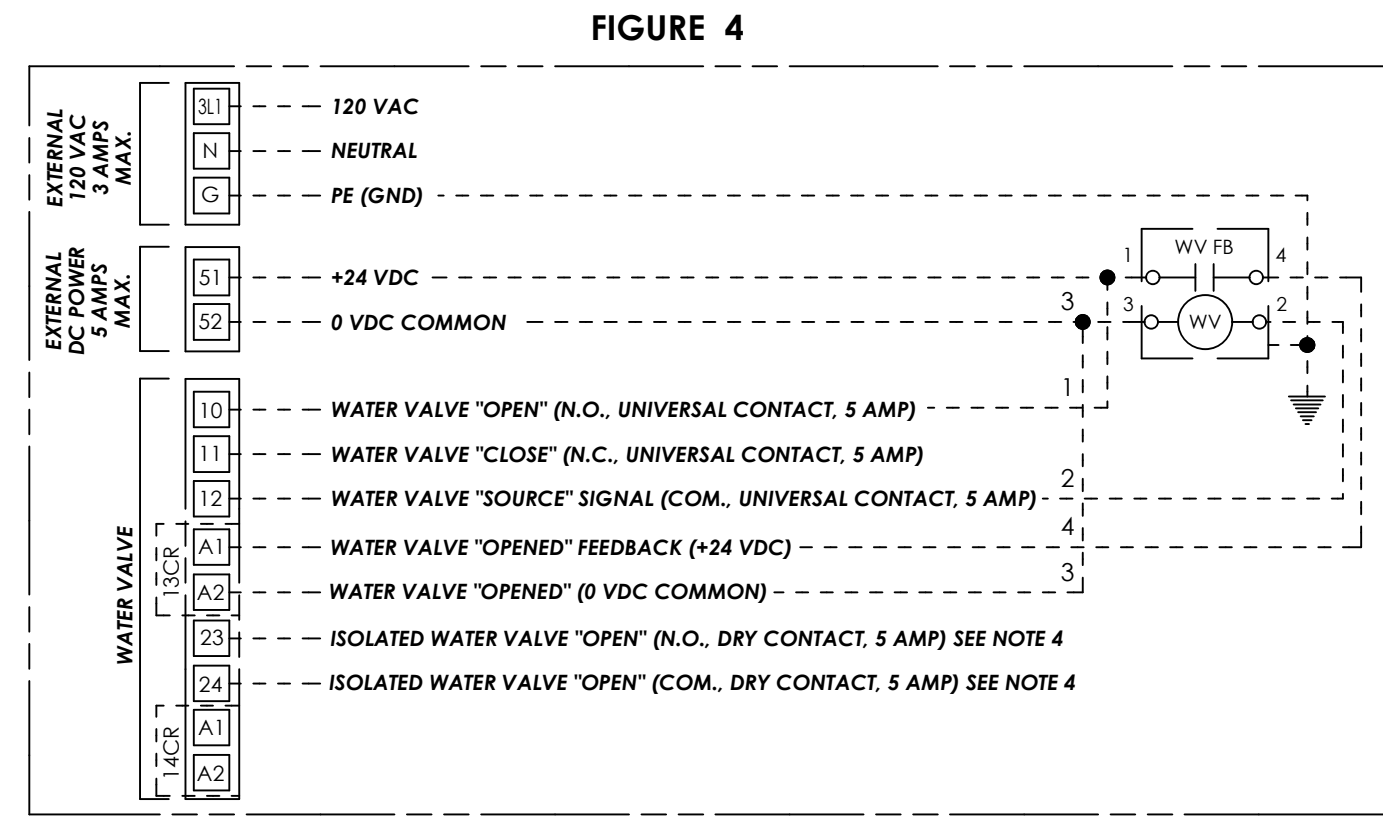


FIGURE 4

EXAMPLE OF A 24 VDC WATER VALVE (WV) SOLENOID WITH 24 VDC FEEDBACK (WV FB) (SEE NOTE 1). THE OUTPUT COIL WILL REMAIN SEALED UNTIL A REQUEST TO CLOSE THE VALVE OCCURS AT THE MMCP. THIS CONNECTION IS FOR A NON-ELKHART BRASS NORMALLY CLOSED VALVE.

- WATER VALVE "OPEN" AND "CLOSE" SIGNALS ALONG WITH AUXILIARY DEVICE "ON" AND "OFF" ARE SUPPLIED AS DRY CONTACTS. THIS GIVES THE OPTION FOR THE END USER TO CONNECT THEIR DEVICES ACCORDINGLY. IF NEED BE EXTERNAL DC AND AC POWER TERMINALS ARE SUPPLIED FOR SUCH CONNECTIONS.
- PROVISIONS HAVE BEEN MADE TO ACCOMMODATE EITHER A 24 VDC OR 120 VAC FEEDBACK SIGNAL FROM BOTH DEVICES. WIRE CIRCUIT TO APPROPRIATE VOLTAGE RELAY DEVICE AS LABELED. SEE MMCP INTERCONNECT DWG. #30231031S1
- NUMBER OF CONDUCTORS MAY VARY ACCORDING TO DEVICE CONNECTIONS - TYPICAL 8 CONDUCTORS REQUIRED PLUS SPARES.
- EACH DEVICE HAS A SPARE ISOLATED CONTACT THAT IS ACTIVATED WHEN THE DEVICE RELAY IS ENERGIZED. THIS CONTACT CAN BE USED PER CUSTOMER REQUIREMENTS.
- WHEN CONNECTING ELKHART BRASS VALVE (P/N 70117000 OR 7013300) REFERENCE VALVE MANUAL (P/N 98378000) FOR WIRING DETAILS.
- 51A AND 52 (24 VDC) SHOWN FOR USE BY USER IF REQUIRED.
- 3L1, N, & G (120 VAC) USED FOR WATER VALVE POWER.

REFERENCE DWG. #81504095 (MULTI-MONITOR SPITFIRE SYSTEM LAYOUT)
OR CUSTOM SYSTEM LAYOUT

ELKHART BRASS MFG. CO., INC. #1302 West Beardslay Ave, Elkhart, IN 46514, USA <small>This print and all data contained here on is the sole and exclusive property of Elkhart Brass Mfg. Co., INC. and will not be disclosed to others without the consent of Elkhart Brass Mfg. Co., INC. This print must be returned to Elkhart Brass Mfg. Co., INC. Copyright © 2013 by Elkhart Brass Mfg. Co., INC.</small>		DRAWN BY BS DATE 02/18/2015	ELKHART BRASS Fire Fighting Equipment
MATERIAL N/A		CHECKED BY BS DATE 02/19/2015	
TOLERANCE UNLESS OTHERWISE SPECIFIED 2 PLACE DEC. ± .060" 3 PLACE DEC. ± .030" ANGLES ± 1°		WEIGHT (LBS) N/A	DESCRIPTION WATER VALVE TO MMCP ELECTRICAL INTERCONNECT DRAWING
UNLESS OTHERWISE SPECIFIED DIMENSIOND ARE IN INCHES ALL FILLETS AND ROUNDS R 0.06 DO NOT SCALE PRINT INTERPRET DIMENSIONS AND TOLERANCES PER ASME Y14.5M 1994		CAT. NO. INDUSTRIAL SYSTEMS	SIZE C
CAD MODEL:		THIRD ANGLE PROJECTION	PART NUMBER 30231031S7
			REV. REL
			CAD SCALE:
			SHEET 7 OF 9