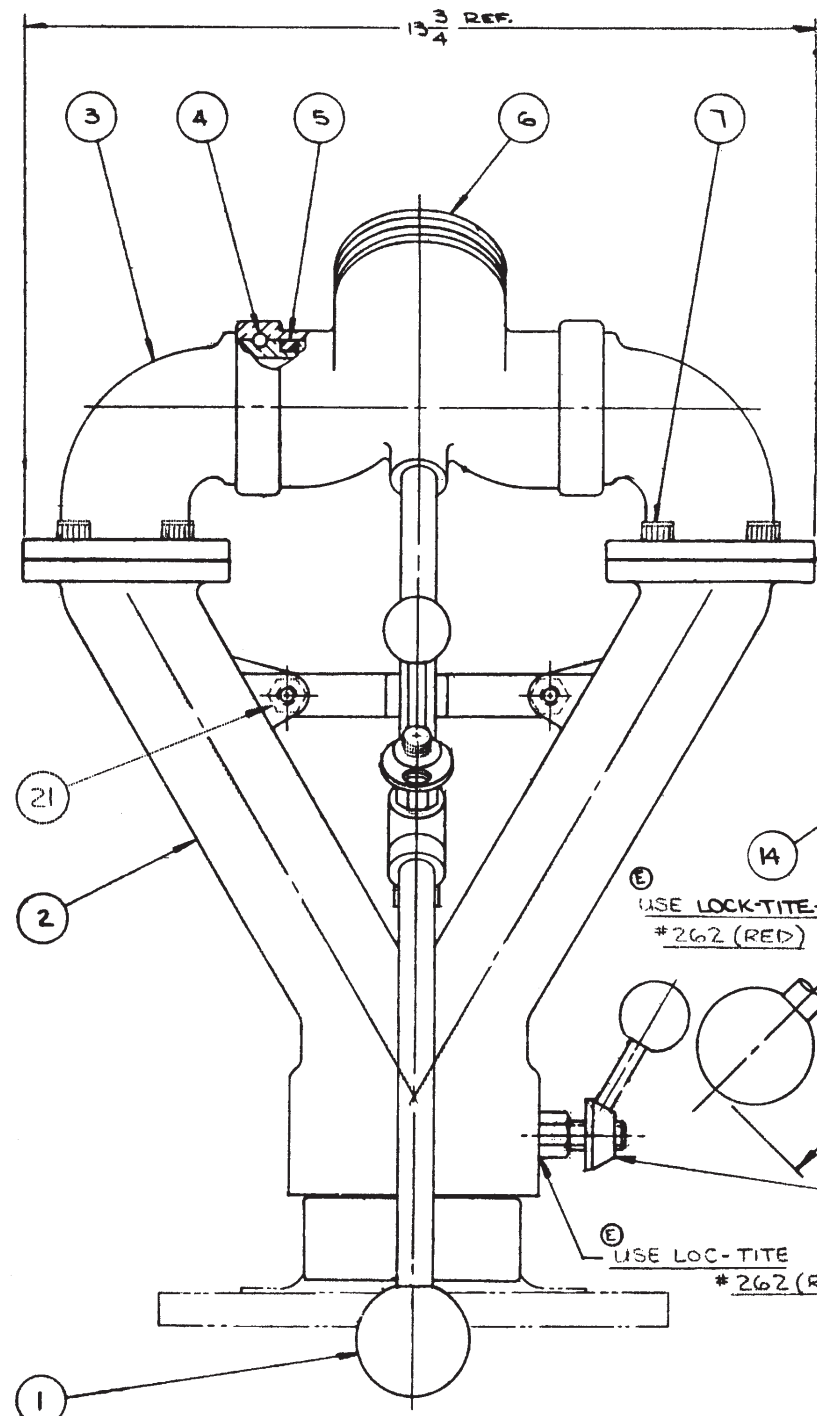
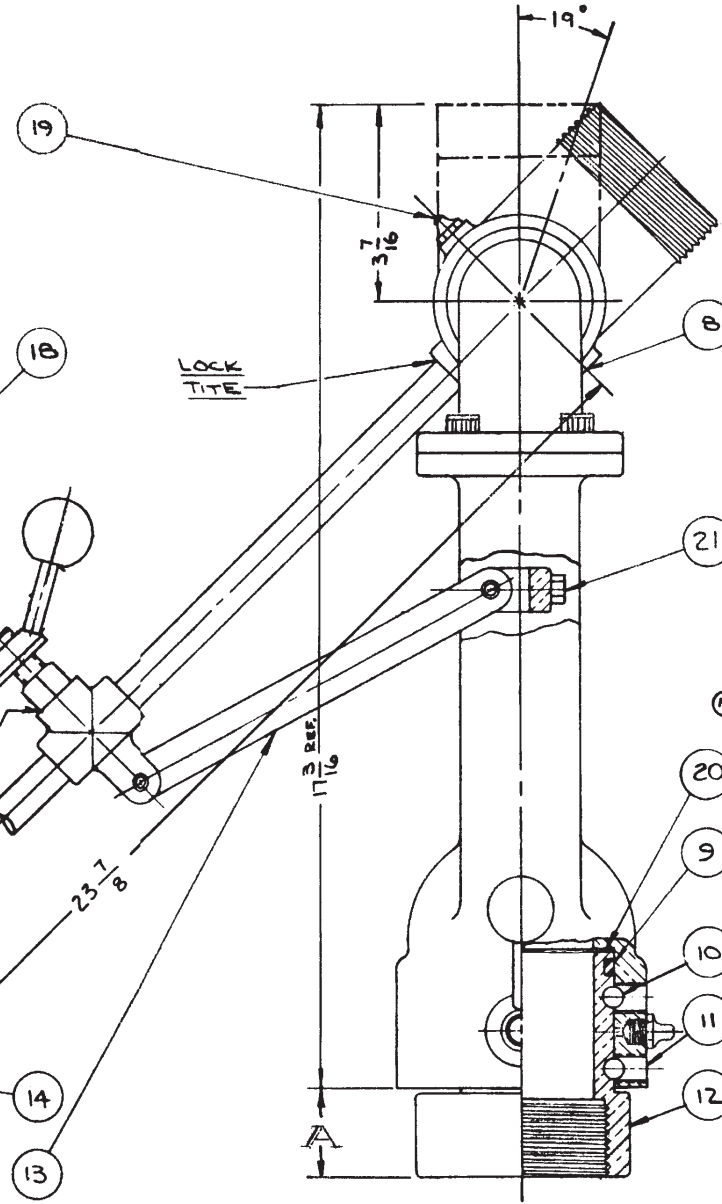


360° - HORIZONTAL TRAVEL
 71° - ABOVE HORIZONTAL
 60° - BELOW HORIZONTAL



WEIGHT - 46 1/4 LBS.



USE ONE

1 1/2"	CAST BRASS	12	15283-B 2505	2 1/2" BASE (2.5T.1P THD)	1
1 1/2"	CAST BRASS	12	15275	4" FLANGE BASE 250 300#	1
1 1/2"	CAST BRASS	12	15276	4" FLANGE BASE 125 150#	1
1 1/2"	CAST BRASS	12	15280	3" FLANGE BASE 250 300#	1
1 1/2"	CAST BRASS	12	15279	3" FLANGE BASE 125 150#	1
1 1/2"	CAST BRASS	12	15278	2 1/2" FLANGE BASE 250 300#	1
1 1/2"	CAST BRASS	12	15274	2 1/2" FLANGE BASE 125 150#	1
2 1/2"	CAST BRASS	12	15250-B 5183	4" BASE (T.I.P. FEM.)	1
2 1/2"	CAST BRASS	12	15285-B 2506	3" BASE (T.I.P. FEM.)	1
1 1/2"	CAST BRASS	12	15281-C	6" FLANGE BASE 125 150#	1
1 1/2"	CAST BRASS	12	15282-A	4" FLANGE BASE 125- 150# (RAISED FACE)	1
	SEE DRAWING	NOT SHOWN	CAT. 151	2 1/2" FLAM DELUGE TIP	1
	SEE DRAWING	NOT SHOWN	CAT 2 & 2A	EXTENSION TUBE ASSY.	1
	SEE DRAWING	NOT SHOWN	80139-C	FLANGED BASE & DRAIN VALVE SUB-ASSY. (4"-125-150")	1

OPTIONAL PARTS

PURCHASED	21	61162000	SCREW - MACH. STNLS STL .312 - 18 X .975 - LG. HEX HD	2
PURCHASED	20	33050	GASKET - TEFLON 3.125-OD X 2.625-ID X .046	1
PURCHASED	19	31001 6317	ALEMITE FITTING #1610	3
PURCHASED	18	57421	RING-O A5-568-138 2.112-ID X .103 W.	2
	17			
	16			
	15			
SEE DRAWING	14	A 80018	LOCKING DEVICE ASSY.	2
SEE DRAWING	13	B 80017	LOCKING ASSY.	1
SEE OPTIONAL PARTS	12		BASE - SEE OPTIONAL PARTS	1
PURCHASED	(N) 11	61268	500-20X.350 BRASS SET SCR. - SLOT HEAD	2
PURCHASED	10	15011	.375 DIA. BRASS BALLS	54
PURCHASED	9	51301 5062-U 61222	O' RING 2.815X3.250X.187 GORLUBE DUSTED	1
PURCHASED	8	PS-137	375-24X.187 BRASS SET SCR. - SLOT HEAD	2
PURCHASED	7	61079000	SCR. CAP. 312-18 X .875 SOC. HD. STNLS STL.	8
CAST BRASS	6	71431-C 1255	SMALL WYE	1
PURCHASED	5	57300 5062-T	O' RING 2.000X2.315X.187 GORLUBE DUSTED	2
PURCHASED	4	15005 5980-C	.250 DIA. BRASS BALL	58
CAST BRASS	3	28060-B 2503	90° ELBOW	2
CAST BRASS	2	71358-C	LARGE WYE	1
	1	80292-A	KNOB & SHAFT SUB-ASSY.	1

PARENT NUMBER (00739001) 292-6 REV. N

NOV 27 2001

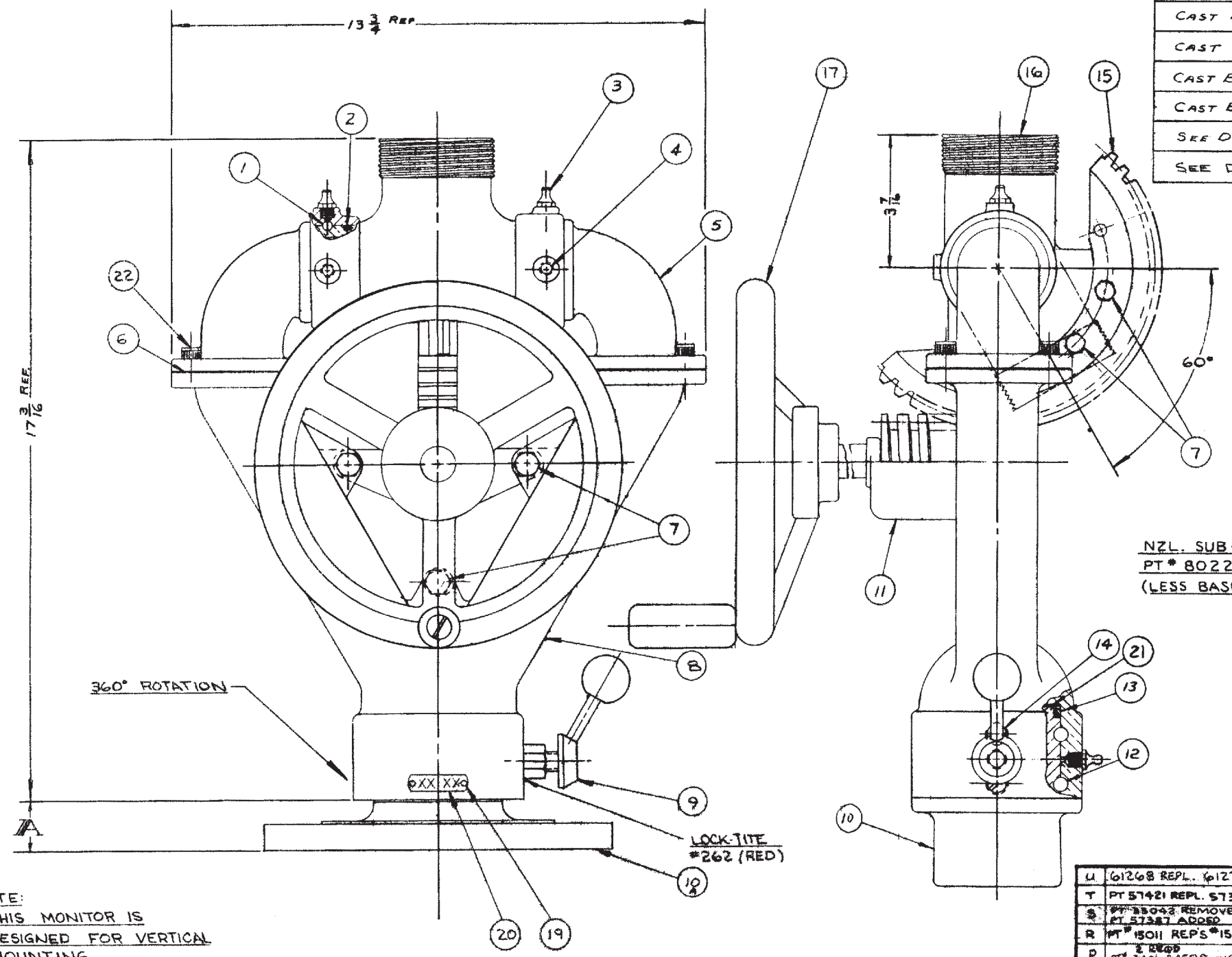
NO.	DRWG NO PART NO	PART NAME	REQ.
ELKHART BRASS MFG. CO., INC. ELKHART, INDIANA ELKHART MONITOR NOZZLE (BRASS)			
N	61268 REPL. 61225	R.M. 9112 02	DRN BY RKP DATE 11-3-67
M	PT 57421 REPL. 57387	R.M. 8702 06	CHKD BY KKP SCALE HALF
REV.	WAS	BY	DATE
MATERIAL:			APPD BY 292-6 (BRASS) FRACTIONS ± .010 DECIMALS ± .001 ANGLES ± .5° REMOVE ALL BURRS AND SHARP EDGES UNLESS OTHERWISE SPECIFIED DO NOT SCALE PRINT

292-6 & 292-6H

September, 2002

PART NO.	QUANTITY PER UNIT	DESCRIPTION
80292	1	Knob and Shaft Sub-Assembly
71358	1	Large Wye
28060	2	90° Elbow
15005	58	.250" Brass Balls
57300	2	"O" Ring
71431	1	Small Wye
61071	8	Cap Screw
61162	10	Cap Screw
61228	2	Set Screw
57301	1	"O" Ring
15011	54	.375" Brass Balls
61225	2	Set Screw
80017	1	Locking Assembly
80018	2	Locking Device
57421	2	"O"-Ring
31001	2	Alemite Fitting
33050	1	Teflon Gasket
80292 INDIVIDUAL PARTS		
42023	1	Knob
61521	1	Handle shaft
80017 INDIVIDUAL PARTS		
20632	1	Locking Collar
51224	1	Roll Pin
16467	1	Brace
51237	1	Roll Pin
16560	1	Bridge
80018 INDIVIDUAL PARTS		
51289	1	Pin
62806	1	Lock Stud
47520	1	Nut Lock
44143	1	Lock Washer
51242	1	Roll Pin
42022	1	Handle Knob
61523	1	Handle Shaft
OPTIONAL BASES		
15283	1	2.5" NPT Female
15285	1	3" NPT Female
15250	1	4" NPT Female
15274	1	2.5" 150# Flange (FF)
15279	1	3" 150# Flange (FF)
15298	1	3" 150# Flange (RF)
15280	1	3" 300# Flange (FF)
15276	1	4" 150# Flange (FF)
15282	1	4" 150# Flange (RF)
15275	1	4" 300# Flange (RF)
15277	1	4" 300# Flange (FF)
15281	1	6" 150# Flange (FF)
80620	1	Hydrant Elbow Sub-Assembly, 2.5" NHT
80620 INDIVIDUAL PARTS		
28051	1	Hydrant Elbow
62916	1	2.5" R/L Swivel
61248	1	Set Screw
15016	52	.187" Diam. Brass Ball
33083	1	2.5" Rubber Gasket
42075	4	Lock Knob
57760	2	Support Rod
71213	2	Handwheel
16392	2	Eye Bolt (.500"-13)
71061	2	Flat Washer
47464	2	Hex Nut (.500"-13)

BASE USED	REF.
FLANGED - 4" (125°-150°)	1 1/2
FLANGED - 4" (250°-300°)	1 1/2
FLANGED - 3" (125°-150°)	1 1/2
FLANGED - 3" (250°-300°)	1 3/32
FLANGED - 2 1/2" (125°-150°)	1 3/16
FLANGED - 2 1/2" (250°-300°)	1 5/16
T.I.P. THD.-4" (FEMALE)	2 3/8



CAST BRASS	10	15283-B	2.5" T.I.P. THD. BASE	1
CAST BRASS	10	15281-C	6" FLANGE BASE 125 150	1
CAST BRASS	10	15278-C	2 1/2" FLANGE BASE 250	1
CAST BRASS	10	15282-A	4" FLANGE BASE 125-50" (2A 50" FAST)	1
CAST BRASS	10	15275-C	4" FLANGED BASE 250 300	1
CAST BRASS	10	15276-C	4" FLANGED BASE 150	1
CAST BRASS	10	15280-C	3" FLANGED BASE 250 300	1
CAST BRASS	10	15279-C	3" FLANGED BASE 150	1
CAST BRASS	10	15274-B	2 1/2" FLANGED BASE 150	1
CAST BRASS	10	15250-B	4" T.I.P. THD. BASE	1
CAST BRASS	10	15285-B	3" BASE	1
CAST BRASS	10	15284-B	SPECIAL 2 1/2" HOSE THD. BASE WITH PIN LUGS	1
SEE DWG.	NOT SHOWN	CAT. 282	EXTENSION TUBE ASSY.	1
SEE DWG.	NOT SHOWN	CAT. 181	2 1/2" PLAIN DELUGE TIP	1

22	61079000	SCREW-MACH. (S/S) 3/12-15 X 875-LG. SDC. HD.	5
21	33050	GASKET-TEFLON 3/8 O.D. X 1/2 I.D. X 3/4	1
20	44242000	LABEL - SERIAL NUMBER	1
19	61215100	SCREW-DRIVE (S/S) #4 X .187-LG. RD. HD. TYPE W	2
17	80159	HANDWHEEL SUB-ASSY	1
16	71449	SMALL WYE	1
15	33605	WORM GEAR	1
14	61248	SCREW-SET (BRASS) 500-20 X 250 LG. SLT. HD.	2
13	57301	O-RING GRC 27-39 GORLUBE IMPREGNATED	1
12	15011	3/8 DIA. BRASS BALL	54
11	80133	GEAR CASE ASSY.	1
10	15283	BASE-MONITOR 2.5 N.P.T. FEM.	1
9	80018	LOCKING DEVICE ASSY.	1
8	71358	LARGE WYE	1
7	61162	SCR. CAP. 3/12-16 X 875. HEX. HD. STNLS. STL.	7
6	57421	RING-O AS-566-158 2.112" ID X .103" W	2
5	28060	90° ELBOW	2
4	61221000	3/8-24 X 312-LG. BRASS SLT. HD. SET SCR.	2
3	31001	ALUMITE FITTING #1610	3
2	57300	O-RING GRC-27-32 GORLUBE IMPREGNATED	2
1	15005	1/2 DIA. BRASS BALLS	58

NZL. SUB-ASSY
PT # 80225-A
(LESS BASE)

NOTE:
THIS MONITOR IS
DESIGNED FOR VERTICAL
MOUNTING.

NOV 27 2001

U	61268 REPL. 61225	RM	9/12	NO.	DRWG NO	PART NO	PART NAME	REQ.
T	PT 57421 REPL. 57387	RM	8/02	ELKHART BRASS MFG. CO., INC. ELKHART, INDIANA 600 G.P.M. ELKHART MONITOR NOZZLE ASSY. DRN BY: PATTERSON DATE 7-17-66 PART NO CHD BY: KLP SCALE HALF REV. BY: WAS DATE APPD BY: 293-6 (BRASS)				
S	PT 57302 REMOVED	RM	8/06					
R	PT 57387 ADDED	RM	8/08					
P	PT 15011 REPL. 15002	RM	8/05					
N	REVISIONS RED. DRAWN	RM	8/01					

293-6 & 293-6H

September, 2002

PART NO.	QUANTITY PER UNIT	DESCRIPTION
15005	58	.250 Diam. Brass Ball
57300	2	"O" Ring
31001	3	Grease Zerk
61222	2	Slot Head Set Screw
28060	2	Elbow
57421	2	"O" Ring
61161	7	Hex Head Machine Screw
71358	1	Large Wye
80018	1	Locking Device Assembly
80133	1	Gear Case Sub-Assembly
15011	54	.375 Diam. Brass Ball
57301	1	"O" Ring
61268	2	Slot Head Set Screw
33605	1	Worm Gear
71449	1	Small Wye
80159	1	Hand Wheel Sub-Assembly
33050	1	Teflon Gasket
61215	2	Drive Screw
44242	1	Serial No. Label
61079	8	Soc. Head Machine Screw

80018 INDIVIDUAL PARTS

51289	1	Pin
62806	1	Lock Stud
47520	1	Lock Nut
44143	1	Lock Washer
51242	1	Roll Pin
42022	1	Handle Knob
61523	1	Handle Shaft

80133 INDIVIDUAL PARTS

20392	1	Gear Case
51240	1	Roll Pin
71245	1	Worm
61579	1	Worm Shaft
63588	1	Spacer

80159 INDIVIDUAL PARTS

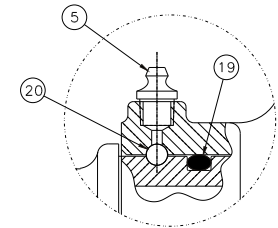
71217	1	Handwheel
16402	1	Swivel Bolt
36267	1	Swivel Handle
51240	1	Roll Pin

OPTIONAL BASES

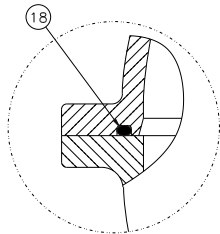
15283	1	2.5" NPT Female
15285	1	3" NPT Female
15250	1	4" NPT Female
15274	1	2.5" 150# Flange (FF)
15278	1	2.5" 300# Flange (FF)
15279	1	3" 150# Flange (FF)
15280	1	3" 300# Flange (FF)
15276	1	4" 150# Flange (FF)
15282	1	4" 150# Flange (RF)
15275	1	4" 300# Flange (RF)
15277	1	4" 300# Flange (FF)
15283	1	2.5" NPT Female
15281	1	6" 150# Flange (FF)
80620	1	Hydrant Elbow Sub-Assembly, 2.5" NHT

80620 INDIVIDUAL PARTS

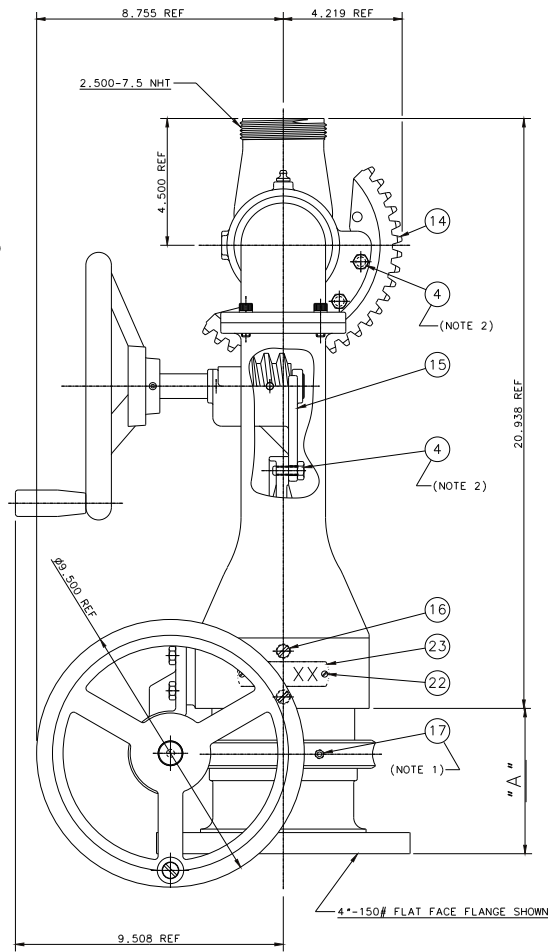
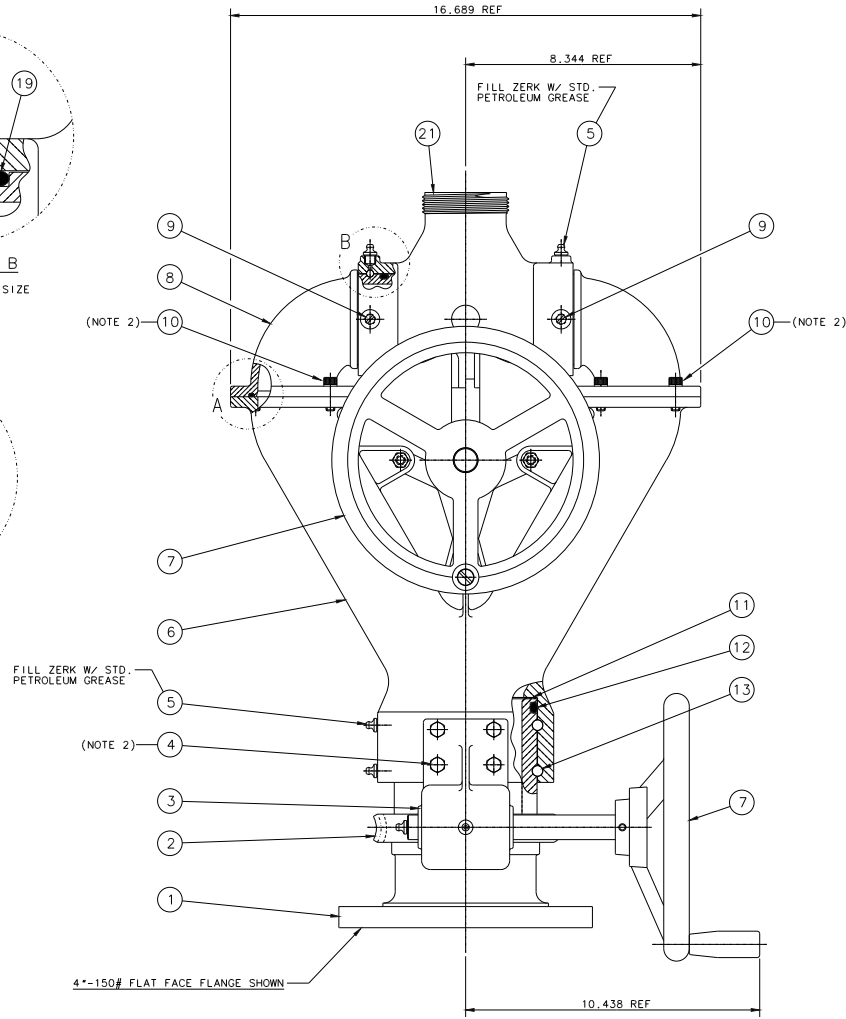
28051	1	Hydrant Elbow
62916	1	2.5" R/L Swivel
61248	1	Set Screw
15016	52	.187 Diam. Brass Ball
33083	1	2.5" Rubber Gasket
42075	4	Lock Knob
57760	2	Support Rod
71213	2	Handwheel
16392	2	Eye Bolt (.500" - 13)
71061	2	Flat Washer
47464	2	Hex Nut (.500" - 13)



DETAIL B
SCALE: 1/2 X SIZE



DETAIL A
SCALE: 1/2 X SIZE



3.5" 250-300# FLANGED BASE	5.406
6" 250-300# FLANGED BASE	5.656
6" 125-150# FLANGED BASE	5.406
5" 250-300# FLANGED BASE	5.406
5" 125-150# FLANGED BASE	5.156
4" 250-300# FLANGED BASE	5.406
4" 125-150# FLANGED BASE	5.218
3" 250-300# FLANGED BASE	5.312
3" 125-150# FLANGED BASE	5.031

PART NAME *A" DIM.

- NOTES:
- 1) .187 DRILL X .062 DEEP, BE CAREFULL NOT TO TOUCH THREADS.
 - 2) USE LOCTITE #242 (BLUE).

NOT SHOWN	CAT# 284-B	STREAM SHAPER (BRASS)	1
294-20 OPTIONAL PART			
NOT SHOWN	CAT# 181-3	BRASS MASTER DELUGE TIP (3.5" INLET X 2.5" DISC. (STD))	1
294-20 OPTIONAL PART			
NOT SHOWN	71447001	SMALL WYE (3.5 NHT M) 2000	1
NOT SHOWN	(00755101)	294-20 (2000 GPM) OPTIONAL PART	1
NOT SHOWN	CAT# 181	BRASS MASTER DELUGE TIP (2.5" INLET X 1.5" DISC. (STD))	1
OPTIONAL PART			
23	44242000	LABEL-SERIAL NUMBER	1
22	61215100	SCREW-MACH. (STNLS. STL) #4 X .187-LG. SLOT HD TYPE-B	2
21	71445001	WYE-SMALL (2.5 NHT M) 1100	1
20	15005000	BALLS- .250 DIA BRASS	80
19	57301000	O-RING (AS-568-336) 2.850-ID X .312-OD X .15-THK	2
18	57379000	O-RING (AS-568-233) 2.850-ID X .312-OD X .15-THK	2
17	63671000	SET SCREW (STNLS. STL) 0.152-18 X .500-LG. CUP POINT	3
16	61268000	SET SCREW (BRASS) 0.152-18 X .500-LG. SLOT HD	2
15	80133001	UPPER GEAR CASE SUB-ASS'Y	1
14	33605001	GEAR-WORM	1
13	15011000	BALLS- .375 DIA BRASS	84
12	57365000	O-RING (AS-568-428) 4.600-ID X .275-W (TEFLON COATED)	1
11	33051000	SECRET TEFLON 5.0-00 X 4.625-ID X .046 THK	1
10	61079000	CAP SCREW (STNLS. STL) 0.312-18 X .875-LG. 300 FD	8
9	61221000	SET SCREW (BRASS) 0.312-18 X .312-LG. SLOT HD	2
8	28064001	ELBOW-90 DEGREE	2
7	80159001	HANDWHEEL ASS'Y (9.5" DIA)	1
6	71371001	WYE-LARGE	2
5	31001000	ALEMITE FITTING #1610	4
4	61162000	WASH. SCREW (STNLS. STL) 0.312-18 X .875-LG. HEX HD	11
3	80440001	LOWER GEAR CASE SUB-ASS'Y	1
2	33596001	GEAR-(LOWER) WORM	1
1	15265001	3.5 125-150# R.F. FLANGE BASE	1
1	15266001	6" 250-300# F.F. FLANGE BASE	1
1	15264001	6" 125-150# F.F. FLANGE BASE	1
1	15261001	5" 250-300# R.F. FLANGE BASE	1
1	15262001	5" 125-150# F.F. FLANGE BASE	1
1	15263001	4" 250-300# R.F. FLANGE BASE	1
1	15257001	4" 125-150# F.F. FLANGE BASE	1
1	15260001	3" 250-300# F.F. FLANGE BASE	1
1	15258001	3" 125-150# F.F. FLANGE BASE	1

USE ONE

NO.	PART NO.	PART NAME	REQ.
ELKHART BRASS MFG. CO., INC. ELKHART, INDIANA			
DOUBLE WHEEL OPERATED MONITOR (1100 & 2000 GPM) BRASS			
1	ADDED 41279000	--- QTY A	9712
1	81182000	--- WAS DTY 18	102
GG	41280000	REF. 312/2000	
REV.	BY	DATE	
1	WJS	1/14/95	
MATERIAL: 294-11 & 20			
STANDARD TOLERANCE: .0005			
2 PLACE DEC. + .0005			
4 PLACE DEC. + .0001			
CADAM: FINISH DIMENSIONS AND SHARP CORNERS UNLESS OTHERWISE SPECIFIED DO NOT SCALE PRINT			

NUMBER (03391001) 294-11 & (00755101) 294-20 (REV. HH)