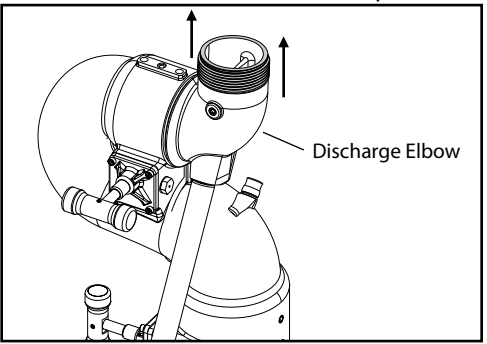
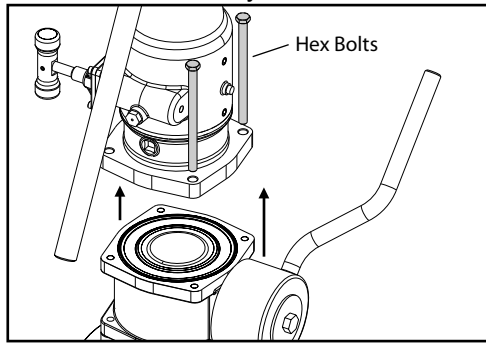


1. A. Depressurize monitor, remove Stream Shaper & Nozzle from Discharge Elbow, and lock Elbow into the vertical position.

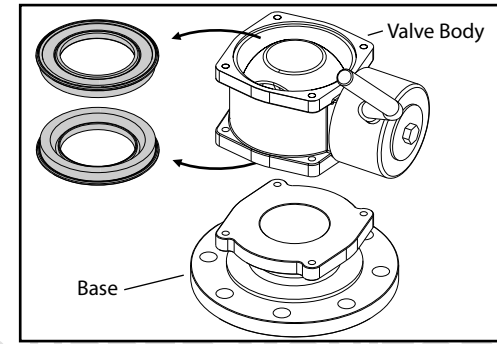


B. Loosen & remove the four hex bolts and remove the upper monitor portion. Lift monitor off slowly.



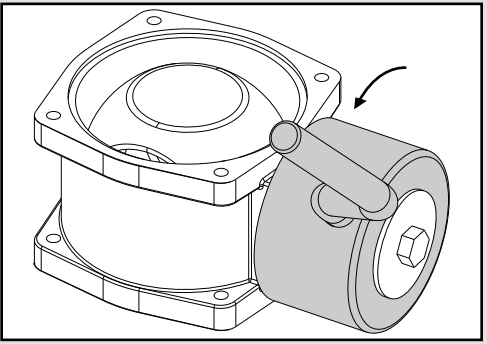
NOTE: The upper portion of the monitor and the valve assembly will no longer be fixed to the base of the monitor. Care should be taken when removing these bolts. Loosening of the lower handle and rotation of the monitor may be required to remove each bolt.

C. Finally, lift the valve body from the base and remove the upper and lower seats.

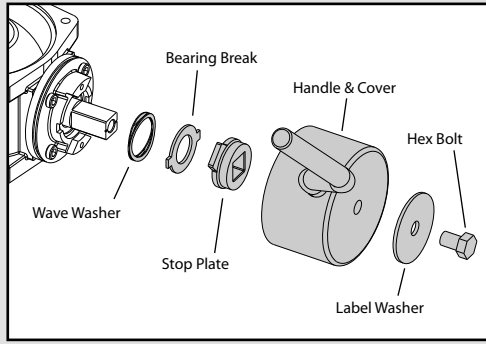


REMOVING UPPER MONITOR

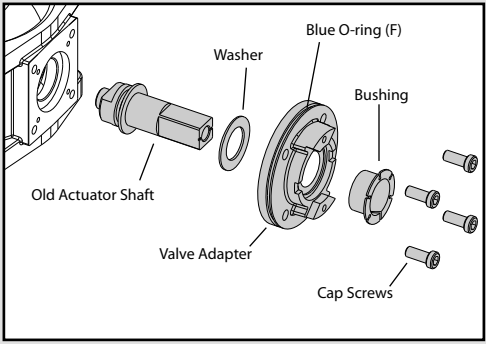
2. A. Before removing the hex bolt from the end of the handle assembly, position the valve in the closed position.



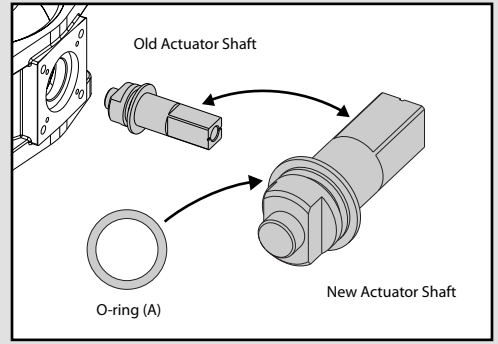
B. Remove the hex bolt and all the parts in the order shown in the illustration below.



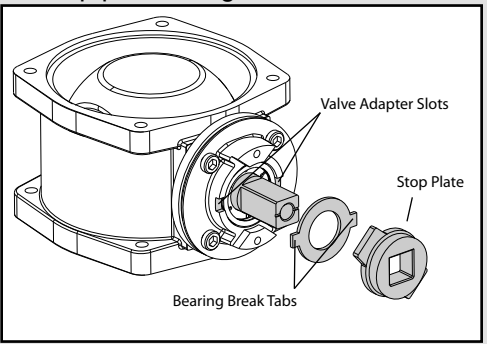
C. Remove the four cap screws followed by the bushing, valve adapter, washer, and old actuator shaft from the valve. Replace Blue O-Ring on Valve Adapter.



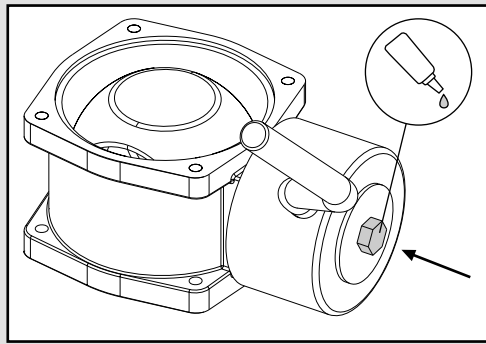
D. Replace actuator shaft & O-ring with the New Style Kit actuator shaft & O-ring (A). Reinstall parts in reverse order.



E. Re-install the wave washer, bearing break, and stop plate making sure the bearing break tabs align in the slots and the stop plate is aligned as shown below.



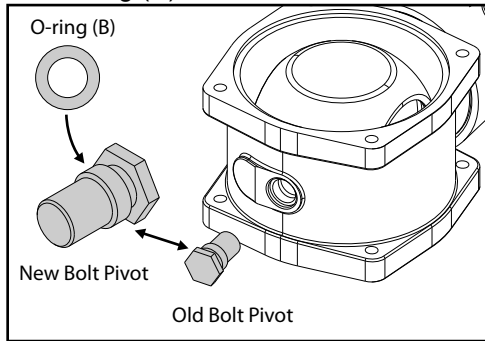
F. Finally, reinstall the handle & handle cover, label washer, and hex bolt in the orientation they were disassembled from. Tighten bolt to 45-55 ft-lbs.



Indicates the use of Loctite 242 or equivalent

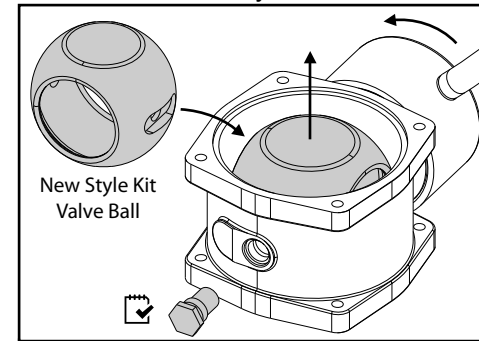
REPLACING THE ACTUATOR SHAFT

3. A. Remove old Bolt Pivot & O-ring, and replace with the New Style Kit Bolt Pivot and O-ring (B).

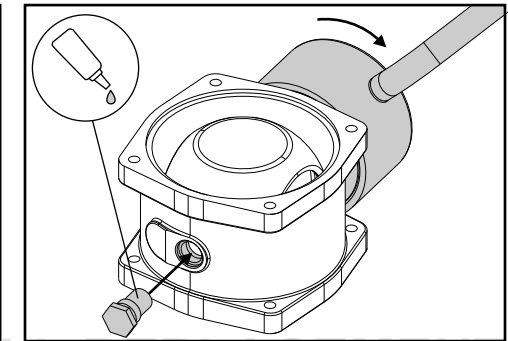


NOTE: For kits with a New Style Kit Valve Ball, proceed to step B. For kits without a new Valve Ball, skip to step C.

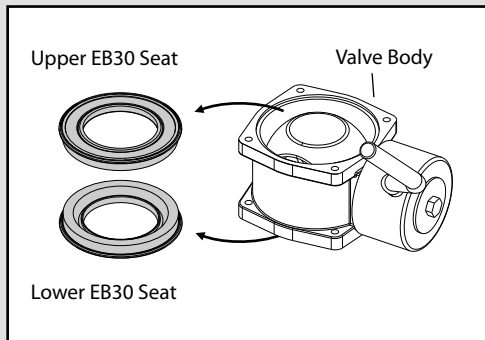
- B. Confirm bolt pivot is removed, and open the valve. Remove and replace old ball with New Style Kit valve ball.



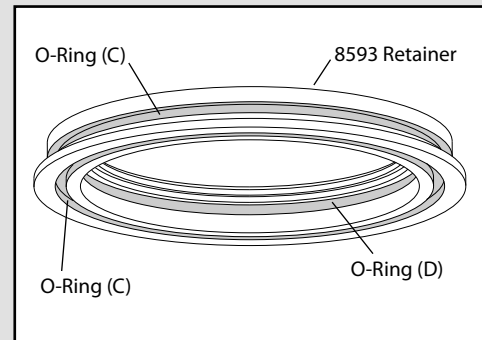
- C. Move the valve back into the closed position before reinstalling the Bolt Pivot. Use Loctite 242 on Bolt Pivot.



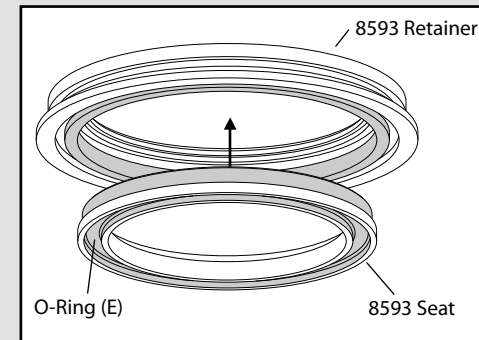
4. A. Remove both the upper and lower EB30 seats from the valve assembly if not already done.



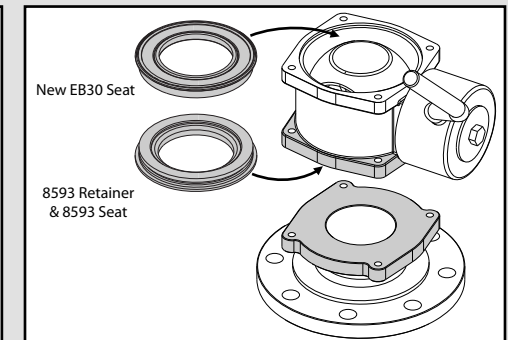
- B. To assemble lower seat, first install 2 O-rings (C) on the outside of the Brass Retainer, and 1 O-ring (D) on the inside.



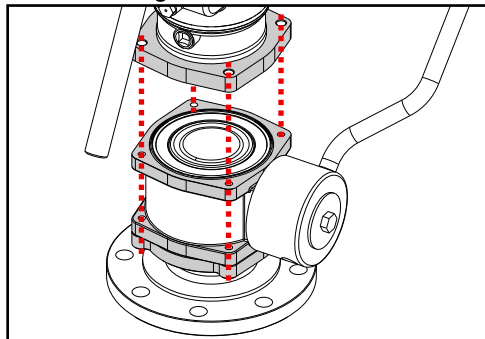
- C. Next, insert the 8593 Seat into the bottom of the brass retainer. Then place O-ring (E) into the slot on the bottom.



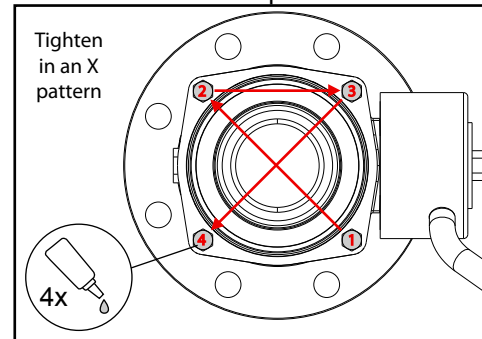
- D. Make sure O-ring (E) does not fall out of position, and construct valve assembly onto the monitor base as shown.



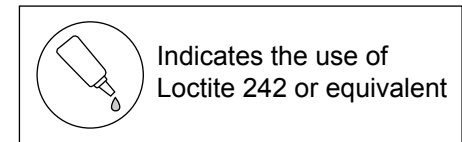
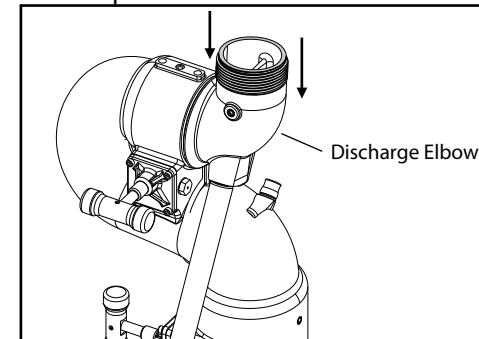
5. A. Carefully lift the monitor onto the valve and align the bolt holes.



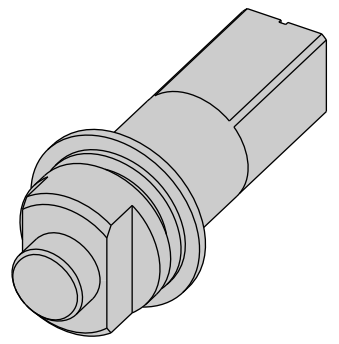
- B. Apply Loctite to threads of all four Hex Bolts, and tighten monitor to base at 20 lb. increments up to 45-55 ft-lbs.



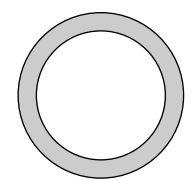
- C. Reattach Stream Shaper and Nozzle to discharge elbow and unlock it from vertical position.



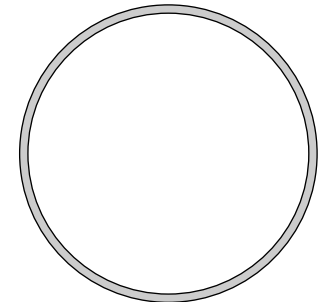
Replacing the Actuator Shaft



P/N 65346001 - 8593 Actuator Shaft (Qty. 1)

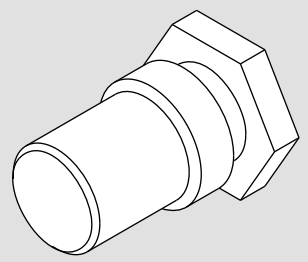


P/N 57344000 - O-Ring (A) (Qty. 1)

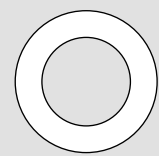


P/N 57290000 - Blue O-Ring (F) (Qty. 1)

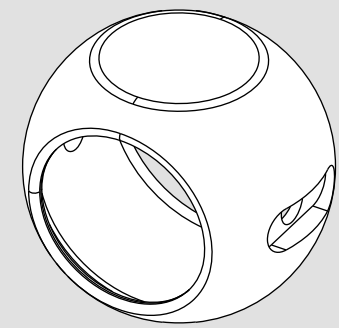
Bolt Pivot & Ball Replacement



P/N 18473001 - 8593 Bolt Pivot (Qty. 1)

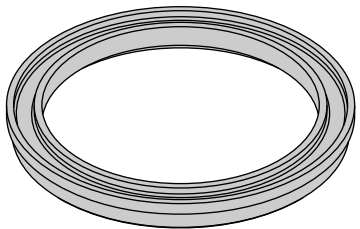


P/N 57530000 - O-Ring (B) (Qty. 1)

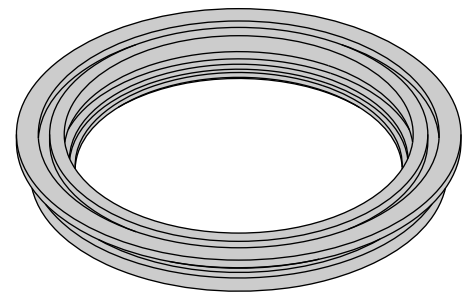


P/N 17331000 - EB30 Ball (Optional, Qty. 1)

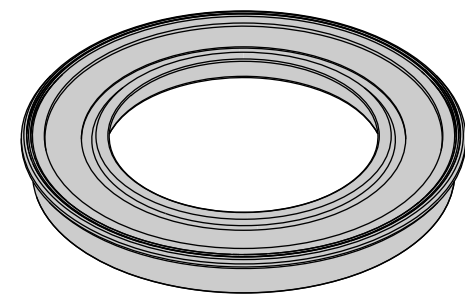
Seat Replacement



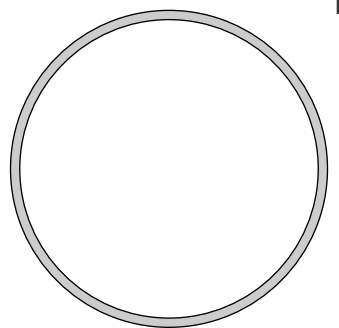
P/N 65020000 - 8593 Seat (Qty. 1)



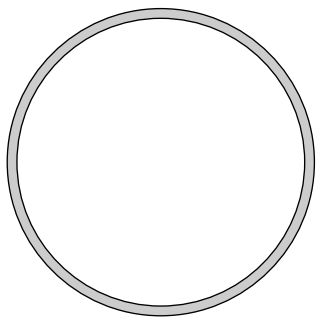
P/N 58912001 - 8593 Retainer (Qty. 1)



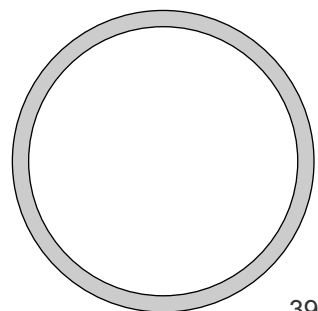
P/N 65015000 - EB30 Seat (Qty. 1)



P/N 57442000 - O-Ring (C) (Qty. 2)



P/N 57378000 - O-Ring (D) (Qty. 1)



P/N 57555000 - O-Ring (E) (Qty. 1)