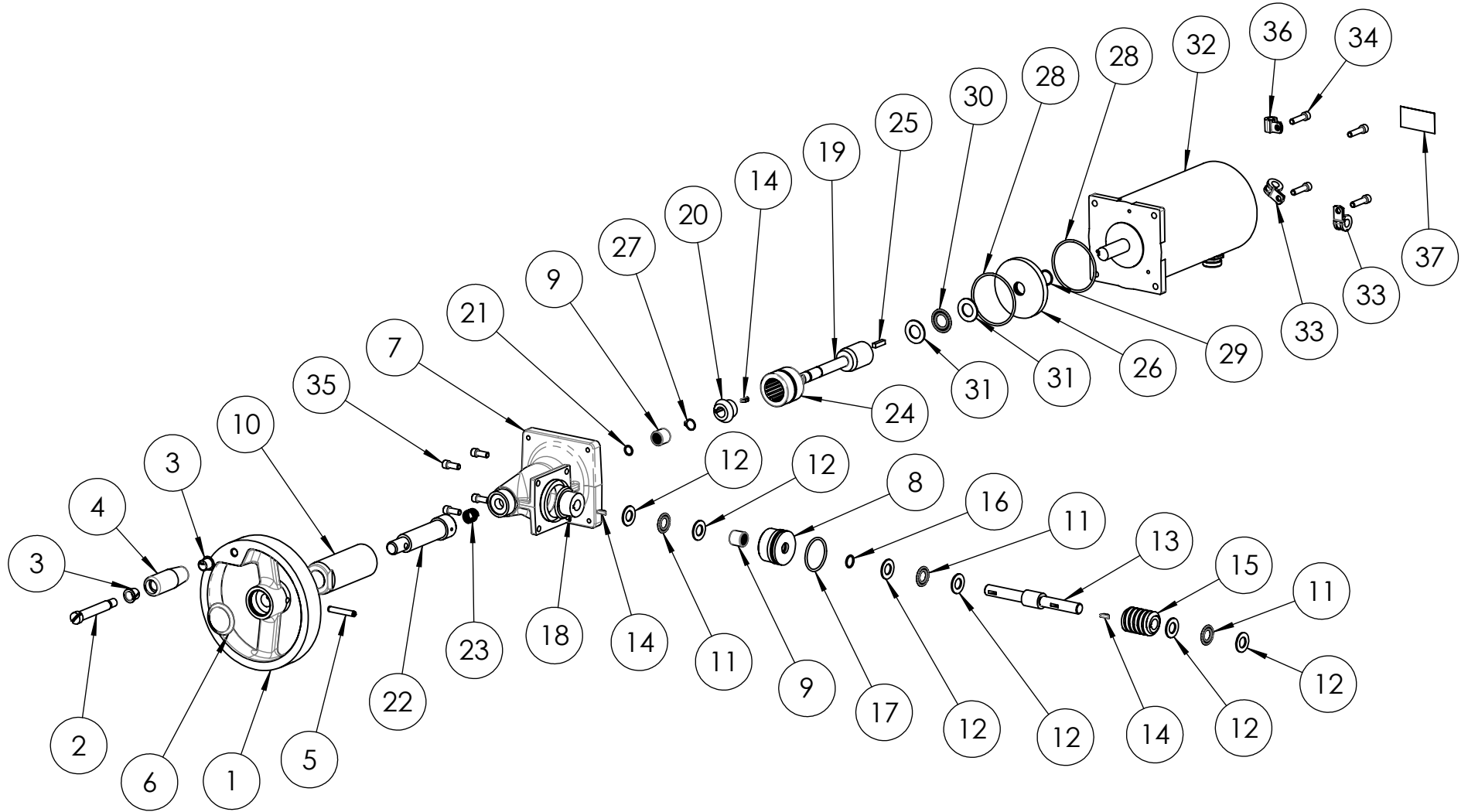


8394-053 TOP MOTOR ASSEMBLY



THIS DRAWING CONTAINS INFORMATION THAT IS PROPRIETARY TO ELKHART BRASS MFG CO., INC. AND MAY NOT BE USED TO PRODUCE ANY PARTS, ASSEMBLIES OR PRODUCTS DESCRIBED HEREIN WITHOUT EXPRESS WRITTEN PERMISSION

8394-053, 8394-05T PARTS
PAGE 1 OF 10
6/15/2007

XXXXXX
DRAWING

ITEM NO.	PART NUMBER	DESCRIPTION	QTY.
1	71236301	6.5" DIA HANDWHEEL (85-5-5-5) "W/0.625 BORE"	1
2	16436001	BOLT SWIVEL SS	1
3	16687000	BUSHING FOR HANDLE SPINNER	2
4	36706001	HANDLE-SPINNER (85-5-5-5)	1
5	51240000	PIN ROLL 79-048-250-1.500	1
6	52018000	PLUG (CAP PLUG #BPF 1.1875) FOR 9786	1
7	24471001	90 DEGREE GEARCASE (85-5-5-5) INDUSTRIAL SPIT-FIRE MONITOR	1
8	65590001	BEARING SPACER	1
9	18306000	BEARING-ROLLER 0.500X0.688X0.625	2
10	10850001	ADAPTER-OVERRIDE (90 DEG)	1
11	15698000	BEARING THRUST 1/2"	3
12	71511000	WASHER THRUST FOR 2940 1/2" SS	6
13	63936001	SHAFT - WORM (S/S) 8294	1
14	42002000	WOODRUFF #404 KEY FOR 8294	3
15	71246000	GEAR - WORM	1
16	57321000	O RING AS-568-014 .489 X.070	1
17	57336000	O RING AS-568-127 1.424 X.103	1
18	33981000	BEVEL GEAR FOR 90 DEGREE GEARCASE	1
19	65337001	Shaft - Motor 90 Degree Gearcase	1

ITEM NO.	PART NUMBER	DESCRIPTION	QTY.
20	33982000	PINION GEAR FOR 90 DEGREE GEARCASE	1
21	57298000	O RING AS-568-012 .364 X.070	1
22	61489001	SHAFT-OVERRIDE (90 DEGREE)	1
23	65705000	SPRING COIL (CO0600-045-0750S)	1
24	18305000	BEARING-ROLLER 1.125X1.625X1.25	1
25	42003000	KEY MACHINED (0.187X.75LG) SS	1
26	65580001	SPACER PLATE	1
27	59131000	RETAINING RING-0.4621 ID	1
28	57318000	O RING AS-568-142 2.362 X.103	2
29	57295000	O RING AS-568-016 .614 X.070	1
30	15699000	BEARING THRUST 5/8"	1
31	71513000	WASHER THRUST 5/8"	2
32	46090001	MOTOR - ELECTRIC (120VAC) SEALED	1
33	23570000	CLAMP - LOOP CUSHIONED (1/2" DIA)	2
34	61047000	SCREW 250-20X1.000 SOC CAP SS	4
35	61041000	SCREW 250-20X0.625 SOC CAP SS	4
36	20449000	CLAMP CUSHION LOOP (3/8 DIA)	1
37	44682000	LABEL - WARNING (MOTOR COVER)	1
38	57429000	O RING AS-568-032 1.864 X.070	1

8394-053 TOP MOTOR ASSEMBLY PARTS

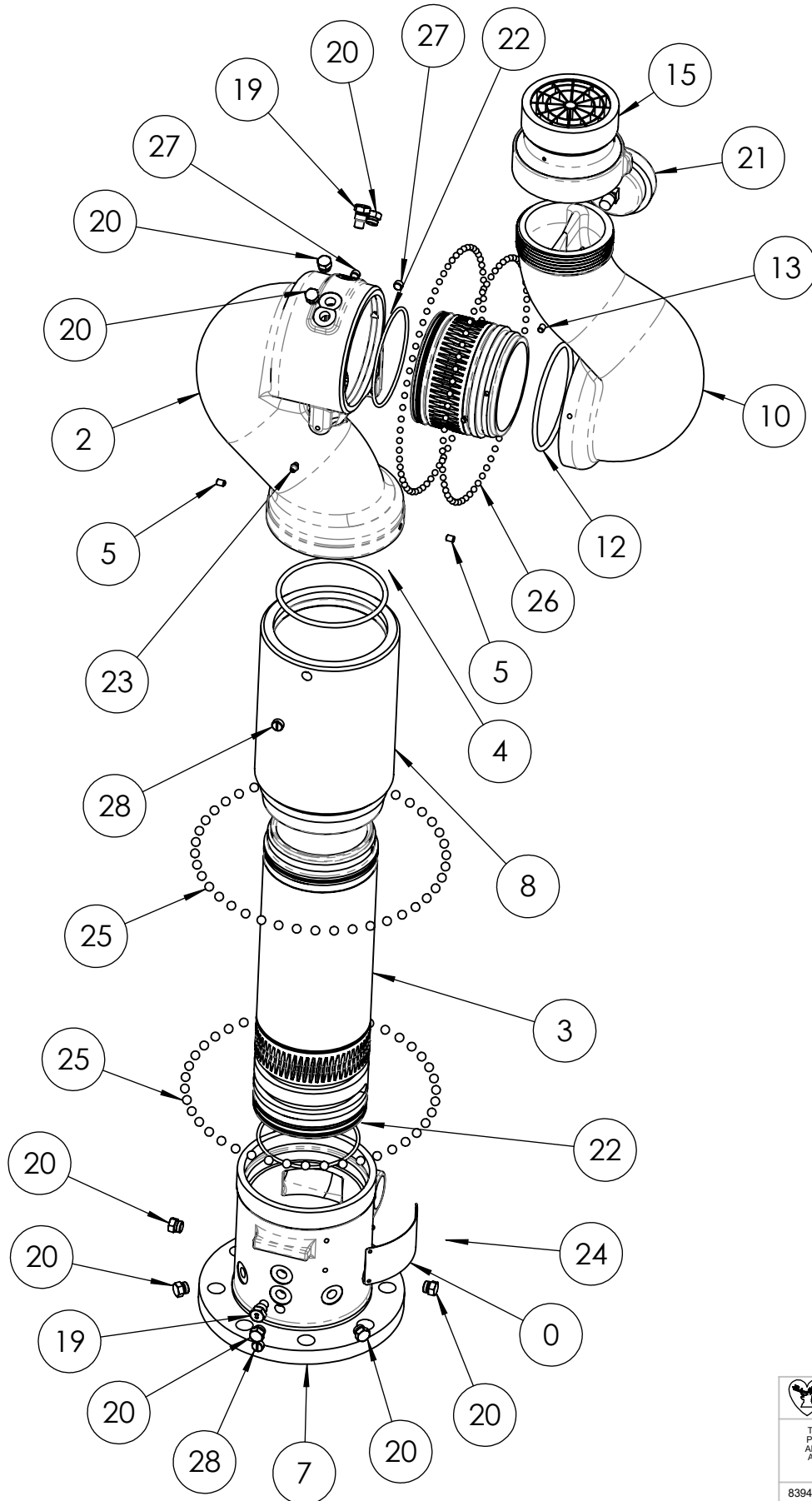



THIS DRAWING CONTAINS INFORMATION THAT IS PROPRIETARY TO ELKHART BRASS MFG CO., INC. AND MAY NOT BE USED TO PRODUCE ANY PARTS, ASSEMBLIES OR PRODUCTS DESCRIBED HEREIN WITHOUT EXPRESS WRITTEN PERMISSION

8394-053, 8394-05T PARTS
PAGE 2 OF 10
6/15/2007

XXXXXX
DRAWING

8394-053 MONITOR BODY ASSEMBLY



	ELKHART BRASS <small>Fire Fighting Equipment</small>	
	<small>THIS DRAWING CONTAINS INFORMATION THAT IS PROPRIETARY TO ELKHART BRASS MFG CO., INC. AND MAY NOT BE USED TO PRODUCE ANY PARTS, ASSEMBLIES OR PRODUCTS DESCRIBED HEREIN WITHOUT EXPRESS WRITTEN PERMISSION</small>	
<small>8394-053, 8394-05T PARTS</small>	<small>PAGE 3 OF 10</small>	<small>XXXXXX DRAWING</small>
<small>6/15/2007</small>		

ITEM NO.	PART NUMBER	DESCRIPTION	QTY.
1	81523001	INLET BODY EXTENDED SUB-ASSY 85-5-5-5 CAST BRASS	1
2	18238301	BODY - INLET (85-5-5-5) WITH CAST VANE	1
3	11788001	ADAPTER - MALE X B/G (LOWER) (85-5-5-5)	1
4	57393000	O RING AS-568-349T 4.475 X.210 TEFLON	1
5	63677000	SCREW 250-20X0.375 SOC SET SS	2
6	81524001	FLANGED EXTENDED BASE ASSY 4"-150# FLANGED BASE	1
7	17982001	BASE-MONITOR "BRASS" (4"-150# FLAT FACE FLANGED)	1
8	11947001	ADAPTER - BASE EXTENSION	1
9	81187001	OUTLET BODY SUB-ASSY (85-5-5-5)	1
10	17668301	BODY - OUTLET (85-5-5-5 CAST BRASS)	1
11	11756301	ADAPTER - MALE X B/G (85-5-5-5)	1
12	57393000	O RING AS-568-349T 4.475 X.210 TEFLON	1
13	63677000	SCREW 250-20X0.375 SOC SET SS	2
14	02529002	284-B 3.5 NHFX3.5NHM SB	1
15	16189002	BODY - STREAM SHAPER (3.5 NHT FEM X 3.5 NHT MA)	1
16	33186000	GASKET RUBBER 4.375X3.562X0.250TH	1
17	61584000	SHAPER - STREAM	2
18	63693000	8-32X0.250 SOC SET CON SS	2
19	65075001	SCREW (CAM) DRIVE (8294/8394)	2
20	51863000	PLUG STOP (BRASS HEX) 8394	8
21	33587000	GAUGE - PRESSURE (0-300 PSI)	1
22	57452000	O RING AS-568-158 4.737 X.103	2
23	31011000	GREASE FITTING (3/16 DR-SS)	1
24	61215100	SCREW 4X0.187 RD HEAD DRIVE SS	4
25	15009000	BALL (0.375 DIA.) STAINLESS STEEL	84
26	15027000	BALL (0.250 DIA) STAINLESS STEEL	124
27	61248000	SCREW-SET (SLOTTED) BRASS 3/8-24 X 0.250-LG	2
28	61268000	SCREW - SET (SLOTTED) BRASS 0.500-20 X 0.250 LG	2
29	44771000	LABEL - IDENTIFICATION INDUSTRIAL "SPITFIRE" MONITOR	1



ELKHART BRASS
Fire Fighting Equipment

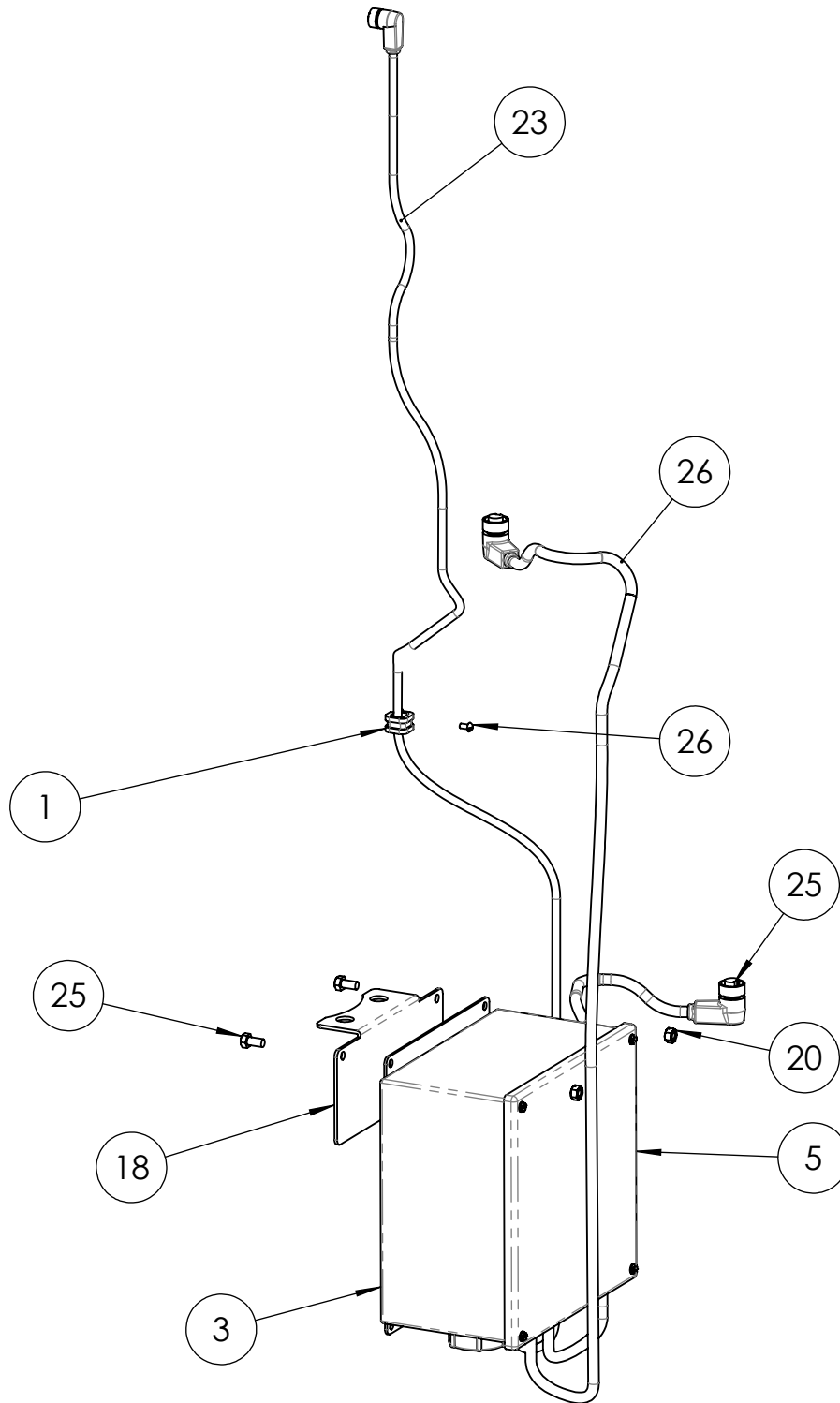
THIS DRAWING CONTAINS INFORMATION THAT IS
PROPRIETARY TO ELKHART BRASS MFG CO., INC.
AND MAY NOT BE USED TO PRODUCE ANY PARTS,
ASSEMBLIES OR PRODUCTS DESCRIBED HEREIN
WITHOUT EXPRESS WRITTEN PERMISSION


8394-053, 8394-05T PARTS
PAGE 4 OF 10
6/15/2007

XXXXXX
DRAWING

8394-053 MONITOR BODY ASSEMBLY PARTS


8394-053 JUNCTION BOX ASSEMBLY



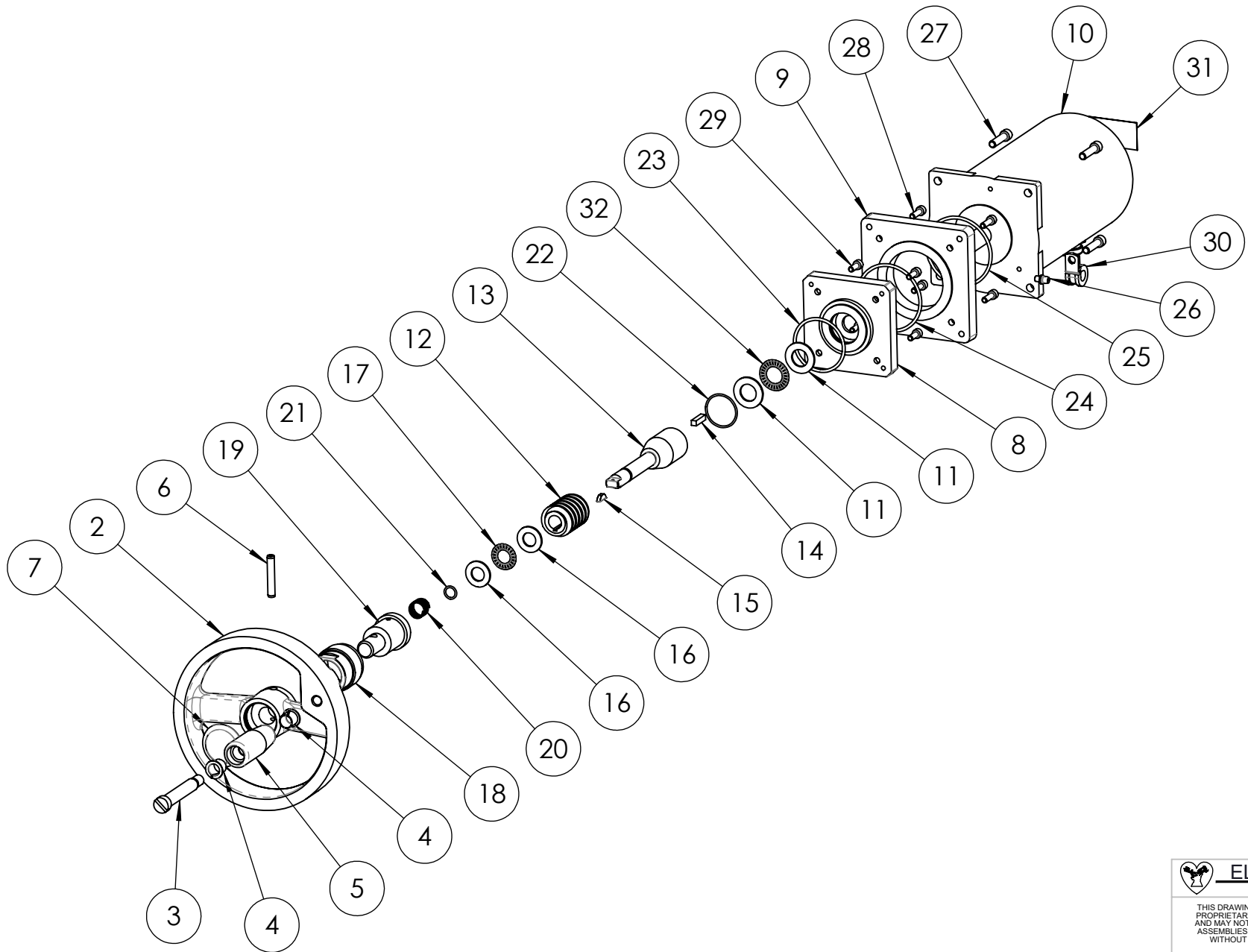
	ELKHART BRASS Fire Fighting Equipment
THIS DRAWING CONTAINS INFORMATION THAT IS PROPRIETARY TO ELKHART BRASS MFG CO., INC. AND MAY NOT BE USED TO PRODUCE ANY PARTS, ASSEMBLIES OR PRODUCTS DESCRIBED HEREIN WITHOUT EXPRESS WRITTEN PERMISSION	
8394-053, 8394-05T PARTS PAGE 5 OF 10 6/15/2007	XXXXXX DRAWING

ITEM NO.	PART NUMBER	DESCRIPTION	QTY.
1	23566000	CLAMP - LOOP CUSHIONED UMPCO NAS1712C9-9N	1
2	81493001	JUNCTION BOX & BRACKET ASSY 10X10X6 ATEX JUNCTION BOX	1
3	28240000	ENCLOSURE - JUNCTION BOX 8394053 INDUSTRIAL MONITOR	1
4	28240_ENCLOSURE-BOX	ENCLOSURE BOX 8394053 INDUSTRIAL MONITOR	1
5	28240_ENCLOSURE-LID	ENCLOSURE LID 8394052 INDUSTRIAL MONITOR	1
6	28240_JUNCTION-BOX-SCREW	28240000 ENCLOSURE SCREW	4
7	28240_HEX-NUT	1/4-20 HEX NUT S/S 28240000 ENCLOSURE	1
8	28240_ENCLOSURE_PLATE	ENCLOSURE PLATE ADELET TSC4X-101006 ENCLOSURE	1
9	28240_PAN_HEAD_SCREW	PAN HD SCREW 10-24	4
10	28240_TERMINAL_RAIL	28240 ENCLOSURE TERMINAL RAIL	1
11	28240_END_CLAMP	END CLAMP 28240000 ENCLOSURE (8394-053)	2
12	28240_AB_1492-JG4_GND_BLK	AB 1492-JG4 GROUNDING BLOCK	3
13	28240_AB_1492-W4_TB	ALLEN BRADLEY TERMINAL BLOCK 1492-W4	13
14	24452000	CORD GRIP (0.375-0.438 CABLE)	2
15	24451000	CORD GRIP (0.312-0.375 CABLE)	1
16	24253000	CONDUIT HUB 1.5 NPTF S/S	1
17	65570000	SPACER - RUBBER	1
18	18357000	BRACKET - JUNCTION BOX FOR 10 INCH WIDE ENCLOSURE	1
19	62159000	SEAL - REINFORCED (0.500-NPT)	3
20	47484000	NUT HEX 0.312-18 SS	2
21	47415000	CONDUIT NUT 1/2"	3
25	65137000	SCREW 312-18X0.625 HEX MACH SS	2
23	23053000	CABLE - CORDSET (08394053 MONITOR ASSY)	1
24	23050000	CABLE - CORDSET	2
25	23050-HORIZ-CABLE	CABLE - CORDSET 08394053 MOMNITOR ASSY	1
26	23050-VERT-CABLE	CABLE - CORDSET 083964053 MONITOR ASSY	1
26	61132000	SCREW 10-24X0.375 RND MACH SS	1

8394-053 JUNCTION BOX ASSEMBLY PARTS

 ELKHART BRASS <small>Fire Fighting Equipment</small>	
<small>THIS DRAWING CONTAINS INFORMATION THAT IS PROPRIETARY TO ELKHART BRASS MFG CO., INC. AND MAY NOT BE USED TO PRODUCE ANY PARTS, ASSEMBLIES OR PRODUCTS DESCRIBED HEREIN WITHOUT EXPRESS WRITTEN PERMISSION</small>	
<small>8394-053, 8394-05T PARTS PAGE 6 OF 10 6/15/2007</small>	<small>XXXXXX DRAWING</small>

8394-053 BASE MOTOR ASSEMBLY




ELKHART BRASS
Fire Fighting Equipment

THIS DRAWING CONTAINS INFORMATION THAT IS PROPRIETARY TO ELKHART BRASS MFG CO., INC. AND MAY NOT BE USED TO PRODUCE ANY PARTS, ASSEMBLIES OR PRODUCTS DESCRIBED HEREIN WITHOUT EXPRESS WRITTEN PERMISSION

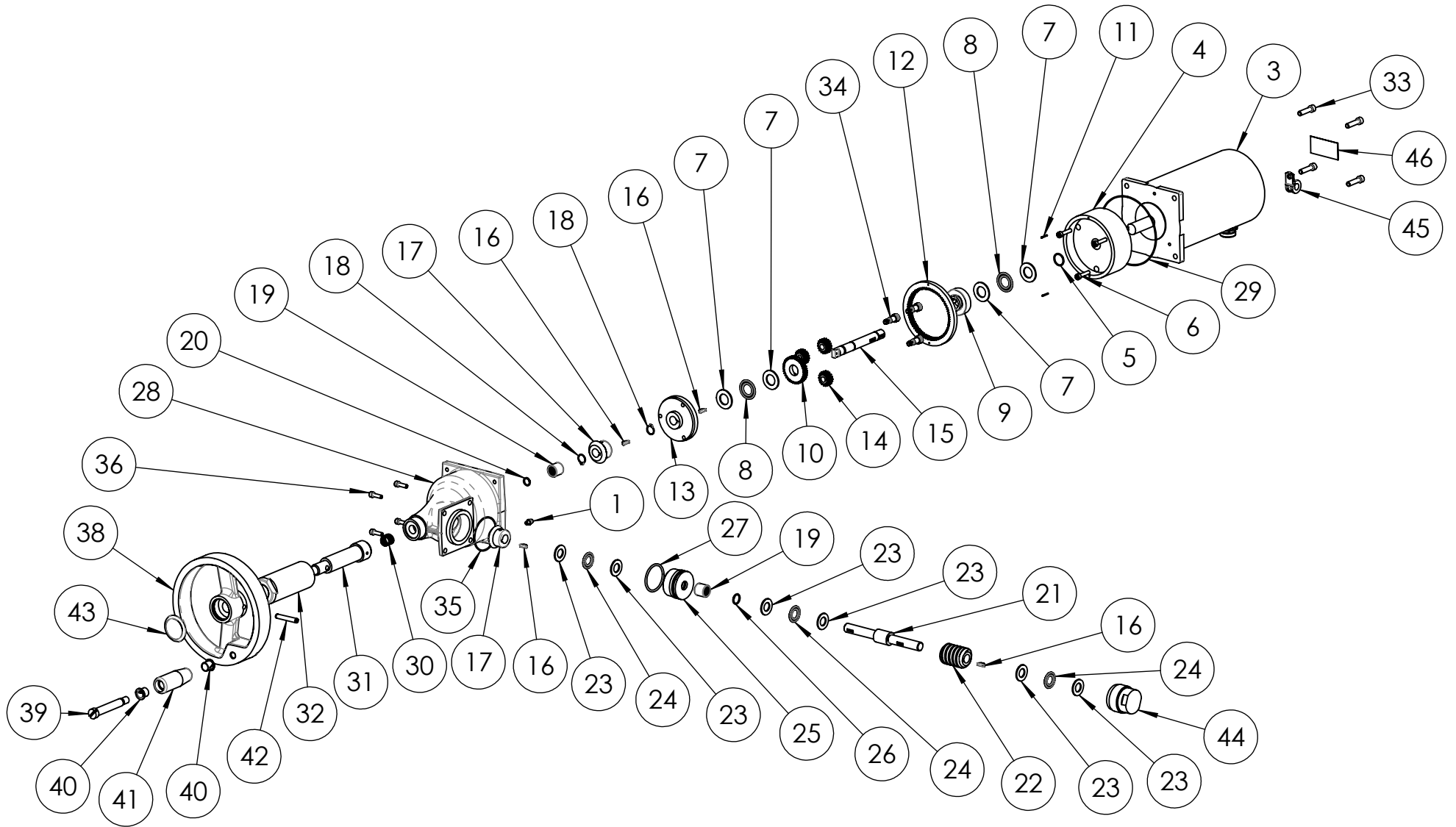
8394-053, 8394-05T PARTS	XXXXXX
PAGE 7 OF 10	DRAWING
6/15/2007	


ITEM NO.	PART NUMBER	DESCRIPTION	QTY.
1	81174001	6.0 HANDWHEEL SUB 0.625 85-5-5-5	1
2	71236301	6.5" DIA HANDWHEEL (85-5-5-5) "W/0.625 BORE"	1
3	16436001	BOLT SWIVEL SS	1
4	16687000	BUSHING FOR HANDLE SPINNER	2
5	36706001	HANDLE-SPINNER (85-5-5-5)	1
6	51240000	PIN ROLL 79-048-250-1.500	1
7	52018000	PLUG (CAP PLUG #BPF 1.1875) FOR 9786	1
8	11720001	ADAPTER - MOTOR FLANGE	1
9	11748001	ADAPTER - MOTOR FLANGE #34-FRAME X #42-FRAME	1
10	46090001	MOTOR - ELECTRIC (120VAC) SEALED	1
11	71513000	WASHER THRUST 5/8"	2
12	71246000	GEAR - WORM	1
13	65334001	SHAFT - MOTOR (HORIZONTAL)	1
14	42003000	KEY MACHINED (0.187X.75LG) SS	1
15	42002000	WOODRUFF #404 KEY FOR 8294	1
16	71511000	WASHER THRUST FOR 2940 1/2" SS	2
17	15698000	BEARING THRUST 1/2"	1
18	10851001	ADAPTER-OVERRIDE (HORIZONTAL)	1
19	61488001	SHAFT-OVERRIDE (HORIZONTAL)	1
20	65705000	SPRING COIL (CO0600-045-0750S)	1
21	57298000	O RING AS-568-012 .364 X.070	1
22	57327000	O RING AS-568-024 1.114 X.070	1
23	57334000	O RING AS-568-133 1.799 X.103	1
24	57383000	O RING AS-568-141 2.300 X.103	1
25	57318000	O RING AS-568-142 2.362 X.103	1
26	31011000	GREASE FITTING (3/16 DR-SS)	1
27	61047000	SCREW 250-20X1.000 SOC CAP SS	4
28	63789000	SCREW 10-24X0.625 SOC CAP SS	4
29	61037000	SCREW 10-24X0.500 SOC CAP SS	4
30	23570000	CLAMP - LOOP CUSHIONED (1/2" DIA)	1
31	44682000	LABEL - WARNING (MOTOR COVER)	1
32	15699000	BEARING THRUST 5/8"	1

8394-053 BASE MOTOR ASSEMBLY PARTS

 ELKHART BRASS <small>Fire Fighting Equipment</small>	<small>THIS DRAWING CONTAINS INFORMATION THAT IS PROPRIETARY TO ELKHART BRASS MFG CO., INC. AND MAY NOT BE USED TO PRODUCE ANY PARTS, ASSEMBLIES OR PRODUCTS DESCRIBED HEREIN WITHOUT EXPRESS WRITTEN PERMISSION</small>	
	<small>8394-053, 8394-05T PARTS</small> <small>PAGE 8 OF 10</small> <small>6/15/2007</small>	<small>XXXXXX</small> <small>DRAWING</small>

8394-05T BASE MOTOR ASSEMBLY




	ELKHART BRASS <small>Fire Fighting Equipment</small>
	<small>THIS DRAWING CONTAINS INFORMATION THAT IS PROPRIETARY TO ELKHART BRASS MFG CO., INC. AND MAY NOT BE USED TO PRODUCE ANY PARTS, ASSEMBLIES OR PRODUCTS DESCRIBED HEREIN WITHOUT EXPRESS WRITTEN PERMISSION</small>
<small>8394-053, 8394-05T PARTS</small>	<small>XXXXXX</small>
<small>PAGE 9 OF 10</small>	<small>DRAWING</small>
<small>6/15/2007</small>	

ITEM NO.	PART NUMBER	DESCRIPTION	QTY.
1	31011000	Grease Fitting (3/16 DR-SS)	1
2	81773001	90 DEG GEARCASE ASSEMBLY 3:1 PLANETARY	1
3	46090001	MOTOR - ELECTRIC (120VAC) SEALED	1
4	65616001	SPACER, MOTOR TO PLANETARY	1
5	57295000	O RING AS-568-016 .614 X.070	1
6	64148000	SCREW 10-32X.875 SOC CAP SS	3
7	71513000	Washer Thrust 5/8"	4
8	15699000	BEARING THRUST 5/8"	2
9	65623000	SPACER, DRIVE KEYED	1
10	33990010	GEAR, SUN 3:1 PLANETARY	1
11	52994000	PIN, DOWEL 0.063 DIA X 0.500 LG	2
12	33987001	GEAR, INTERNAL PLANETARY RING	1
13	11990001	CARRIER, 3:1 PLANETARY	1
14	33988001	GEAR, PLANET 3:1 PLANETARY	3
15	65379001	SHAFT, PLANETARY TO OVERRIDE	1
16	42002000	WOODRUFF #404 KEY FOR 8294	4
17	33692000	GEAR - MITER	2
18	59131000	RETAINING RING-0.4621 ID	2
19	18306000	Bearing-Roller 0.500x0.688x0.625	2
20	57298000	O RING AS-568-012 .364 X.070	1
21	63936001	SHAFT - WORM (S/S) 8294	1
22	71246000	GEAR - WORM	1
23	71511000	Washer Thrust for 2940 1/2" SS	6

ITEM NO.	PART NUMBER	DESCRIPTION	QTY.
24	15698000	BEARING THRUST 1/2"	3
25	65617001	SPACER, BEARING PLANETARY	1
26	57321000	O RING AS-568-014 .489 X.070	1
27	57336000	O RING AS-568-127 1.424 X.103	1
28	24483001	CASE - GEAR PLANETARY	1
29	57456000	O RING AS-568-045 3.989 X.070	1
30	65705000	Spring Coil (CO0600-045-0750S)	1
31	61489001	Shaft-Override (90 Degree)	1
32	10850001	Adapter-Override (90 DEG)	1
33	61047000	SCREW 250-20X1.000 SOC CAP SS	4
34	18488000	Shoulder Screw, 1/4-20	3
35	57429000	O RING AS-568-032 1.864 X.070	1
36	63789000	SCREW 10-24X0.625 SOC CAP SS	4
37	81174001	6.0 Handwheel SUB 0.625 85-5-5-5	1
38	71236301	6.5" DIA HANDWHEEL (85-5-5-5) "W/0.625 BORE"	1
39	16436001	BOLT SWIVEL SS	1
40	16687000	Bushing for Handle Spinner	2
41	36706001	Handle-Spinner (85-5-5-5)	1
42	51240000	PIN ROLL 79-048-250-1.500	1
43	52018000	Plug (Cap Plug #BPF 1.1875) For 9786	1
44	10869001	PLUG FOR HORIZONTAL GEARCASE	1
45	23570000	CLAMP - LOOP CUSHIONED (1/2" DIA)	1
46	44682000	LABEL - WARNING (MOTOR COVER)	1

8394-05T BASE MOTOR ASSEMBLY PARTS

	ELKHART BRASS
	Fire Fighting Equipment
THIS DRAWING CONTAINS INFORMATION THAT IS PROPRIETARY TO ELKHART BRASS MFG CO., INC. AND MAY NOT BE USED TO PRODUCE ANY PARTS, ASSEMBLIES OR PRODUCTS DESCRIBED HEREIN WITHOUT EXPRESS WRITTEN PERMISSION	
8394-053, 8394-05T PARTS	XXXXXX
PAGE 10 OF 10	DRAWING
6/15/2007	